

MARK MORRIS H.S. SHOP CLASSROOM REMODEL

PROJECT TEAM

OWNER
LONGVIEW SCHOOL DISTRICT
2080 38TH AVENUE
LONGVIEW, WA 98632
PHONE: 360-442-1841
CONTACT: JASON REETZ
E-MAIL: jreetz@longview.k12.wa.us

MECHANICAL
MKE & ASSOCIATES, INC
6915 SW MACADAM AVE
PORTLAND, OR 97219
PHONE: (503) 892-1188
CONTACT: JACOB PEN
E-MAIL: jacobp@mke-inc.com

ARCHITECT
COLLINS ARCHITECTURAL GROUP PS
950 12th AVE SUITE 200
LONGVIEW WA 98632
PHONE: (360) 425-0000
CONTACT: JARED BRADSHAW
E-MAIL: jaredb@collinsarchgroup.com

ELECTRICAL
ATHAY AND ASSOCIATES
411 N.E. 83rd STREET
VANCOUVER, WA 98665
PHONE: (360) 574-0199
CONTACT: RON ATHAY
E-MAIL: rathay@athayeng.com

INDEX OF DRAWINGS

ARCHITECTURAL
A3.0 FLOOR PLAN
A5.0 DETAILS

MECHANICAL
M1.0 MECHANICAL SCHEDULES
M2.0 SHOP - DEMO PLAN
M2.1 SHOP - HVAC PLAN
M5.1 MECHANICAL DETAIL SHEET

ELECTRICAL
E0.1 ELECTRICAL SYMBOLS
E1.0 DEMO PLAN
E2.0 LIGHTING PLAN
E3.0 POWER AND SIGNAL PLAN

CODE

BUILDING CODE: 2018 IBC, 2018 WASHINGTON STATE BUILDING CODE

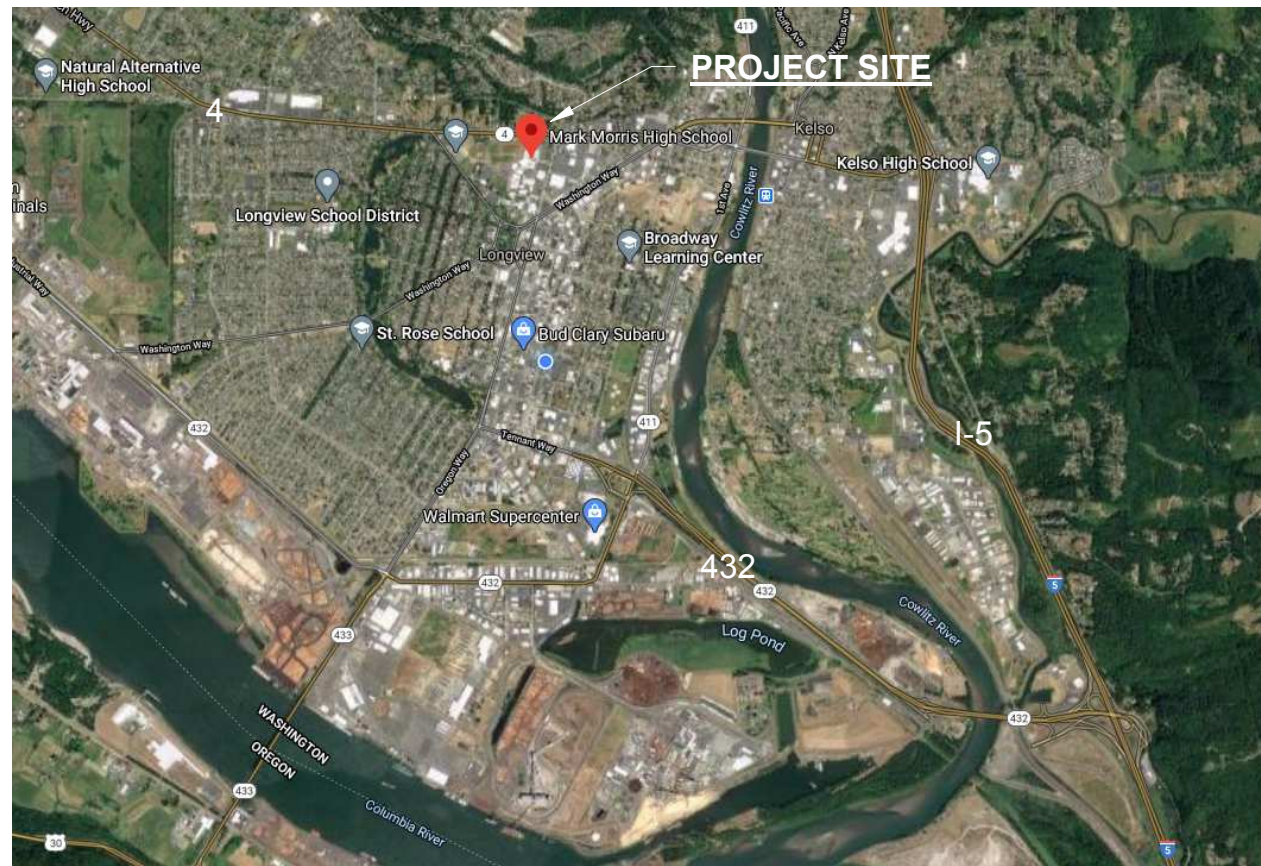
OCCUPANCY: E - EDUCATIONAL

CONSTRUCTION TYPE: TYPE II-B (NON-COMBUSTIBLE)

EMERGENCY LIGHTING: WHERE MORE THAN ONE EXIT IS REQUIRED, EXIT SIGNS ARE REQUIRED. IBC 1013.1.1

TOTAL OCCUPANT LOAD: 99 - TWO EXITS ARE REQUIRED IN AN AREA WITH MORE THAN 49 OCCUPANTS. (IBC TABLE 1006.2.1)
EXIT LIGHTS SHALL BE INSTALLED

VICINITY MAP



PROJECT DESCRIPTION

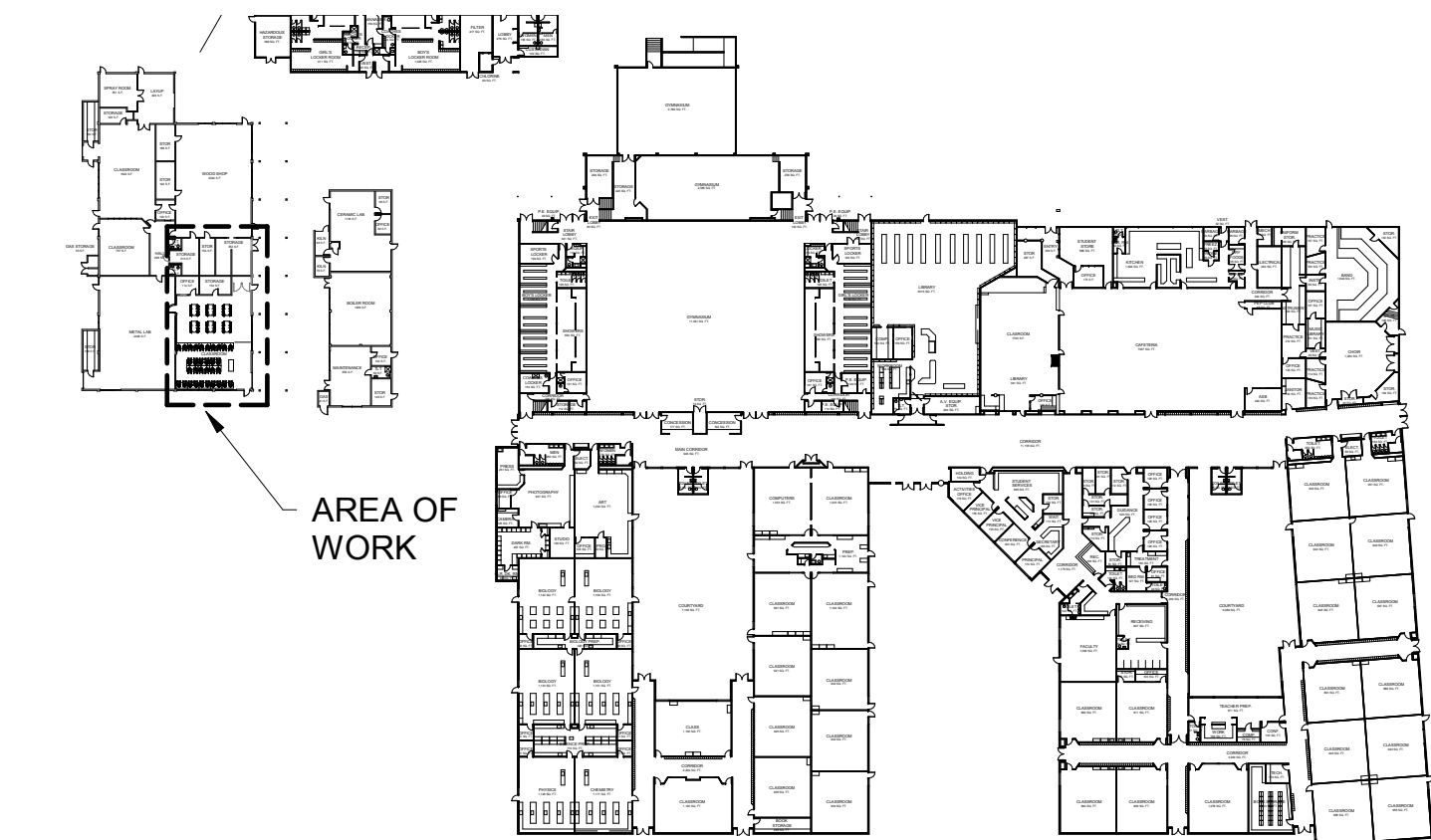
THIS PROJECT CONSISTS OF THE RENOVATION OF THE EXISTING COMPUTER AND STEM LAB UPDATING THE FINISHES, BUILDING ENVELOPE, ELECTRICAL, AND MECHANICAL SYSTEMS.

PLAN KEYNOTES:

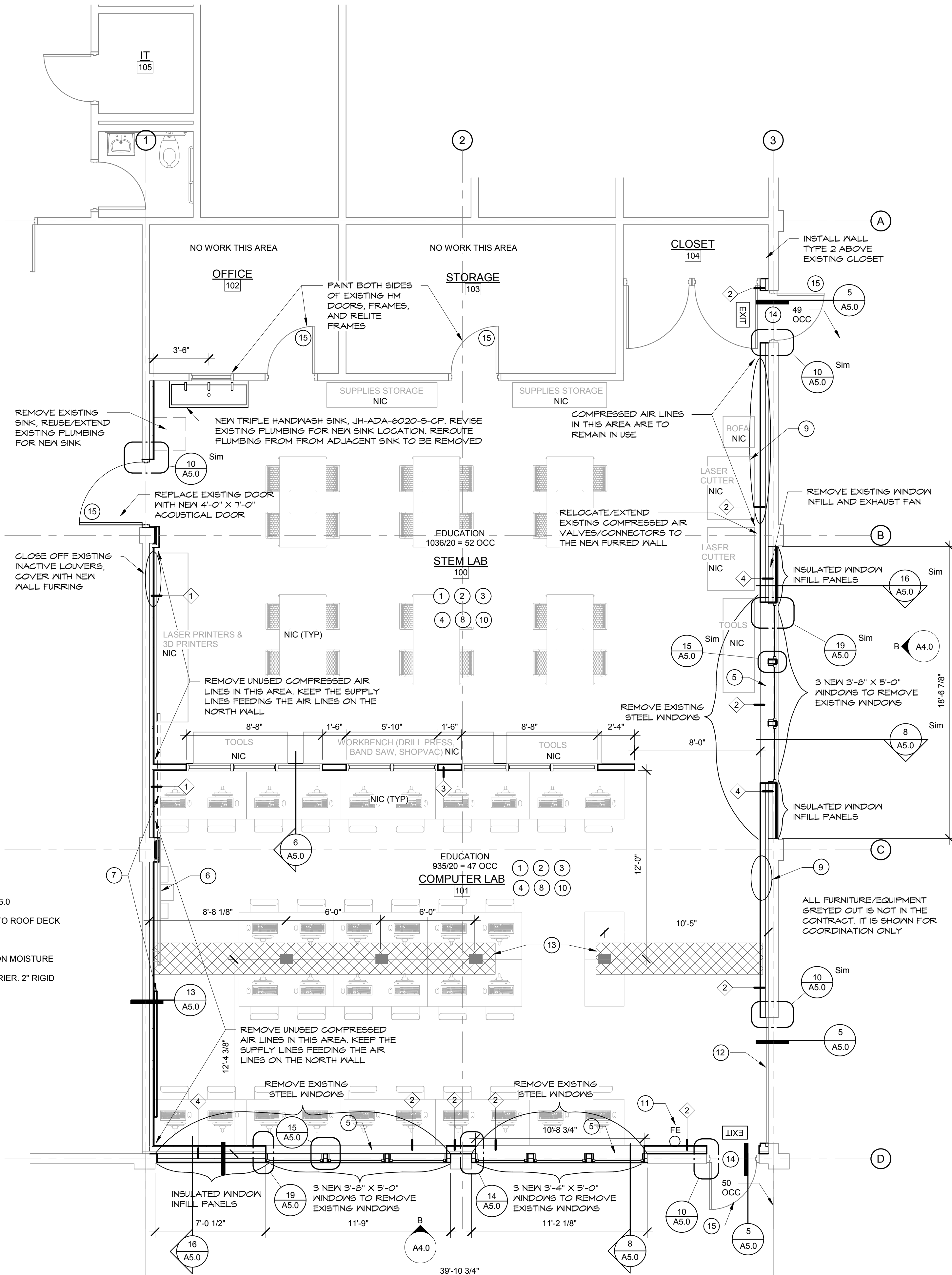
- 1 INSTALL NEW LVT FLOORING AND RUBBER BASE
- 2 REMOVE EXISTING LIGHTING AND INSTALL NEW LED LIGHTING THROUGHOUT
- 3 PAINT CEILING FLAT BLACK INCLUDING JOISTS, CONDUITS, DUCTWORK, AND EQUIPMENT. SEE SPEC SECTION 09 9123
- 4 PAINT ALL WALLS WITHIN ROOM
- 5 INSTALL NEW PLAM WINDOW SILL
- 6 REMOVE WHITE BOARD FROM WALL IN ORDER TO INSTALL NEW ACOUSTICAL FURRING, REINSTALL AT THE SAME LOCATION ONTO NEW WALL SURFACE
- 7 REMOVE WHITE BOARD FROM WALL IN ORDER TO INSTALL NEW ACOUSTICAL FURRING, REINSTALL AT NEW LOCATION. CUT HOLE IN WHITE BOARD WHERE OUTLET ACCESS PANEL IS LOCATED
- 8 ALL NEW WALL FURRING SHALL EXTEND TO THE STRUCTURE ABOVE. SEAL AROUND ALL PENETRATIONS INCLUDING BUT NOT LIMITED TO, CONDUITS, PIPES, ACCESS PANELS, JOISTS, OUTLET BOXES, ETC.
- 9 INSTALL ACCESS PANELS IN NEW WALL TO PROVIDE ACCESS TO EXISTING LB BOXES AND GAS VALVE. SEE SPEC SECTION 08 3100
- 10 REMOVE BUBBLING PAINT ON CMU BEFORE APPLYING NEW PAINT
- 11 REMOVE FIRE EXTINGUISHER FROM WALL AND REINSTALL ON NEW FURRED WALL AT SAME LOCATION
- 12 REMOVE EXISTING OVERHEAD DOOR AND REPLACE WITH NEW 8'-0" x 9'-7" INSULATED OVERHEAD DOOR. VERIFY SIZE ONSITE
- 13 SAWCUT AND REMOVE CONCRETE FLOOR FOR INSTALLATION OF FLOOR OUTLETS. POUR BACK 4" CONCRETE SLAB AFTER OUTLET INSTALLATION. LOCATIONS FOR THE NEW OUTLET FLOOR BOXES ARE SHOWN AS THE GREY BOXES
- 14 EXISTING DOOR, FRAME AND HARDWARE. REPAINT BOTH SIDES OF DOOR AND FRAME.
- 15 REPLACE EXISTING KNOB LOCKSET WITH NEW LEVER LOCKSET.

WALL TYPES:

- 1 TWO LAYERS OF 5/8" GWB ON 2" Z CHANNELS ON SOUND ISOLATION STRIPS ON EXISTING CMU WALL UP TO ROOF DECK. SEE 13/A5.0
- 2 5/8" GWB ON 362162-33 METAL STUDS @ 16" O.C. W/ R-15 BATT INSULATION SPACED 2 INCHES FROM THE EXISTING CMU WALL UP TO ROOF DECK
- 3 5/8" GWB EACH SIDE OF 362162-33 METAL STUDS @ 16" O.C. UP TO ROOF DECK
- 4 AT EXISTING CMU/CONCRETE WALL: (INTERIOR SIDE) 5/8" GWB ON 362162-33 METAL STUDS @ 16" O.C. W/ R-19 BATT INSULATION ON MOISTURE BARRIER SPACED 2 INCHES FROM EXISTING CMU/CONCRETE WALL.
AT WINDOW INFILL: 362162-33 METAL STUDS @ 16" O.C. W/ R-11 BATT INSULATION ON 5/8" GYPSUM SHEATHING ON WEATHER BARRIER. 2" RIGID INSULATION ON 7/8" HAT CHANNELS ON CEMENTITIOUS FLAT PANEL SIDING (EXTERIOR SIDE)



1 SHOP BUILDING KEY PLAN
A3.0 1" = 100'-0"



A FLOOR PLAN
A3.0 1/4" = 1'-0"

Revision Schedule		
#	Date	Description

COLLINS
ARCHITECTURAL GROUP, P.S.
950 12th AVE. SUITE 200
LONGVIEW, WA 98632
PHONE: 360-425-0000
E-MAIL: craig@collinsarchgroup.com

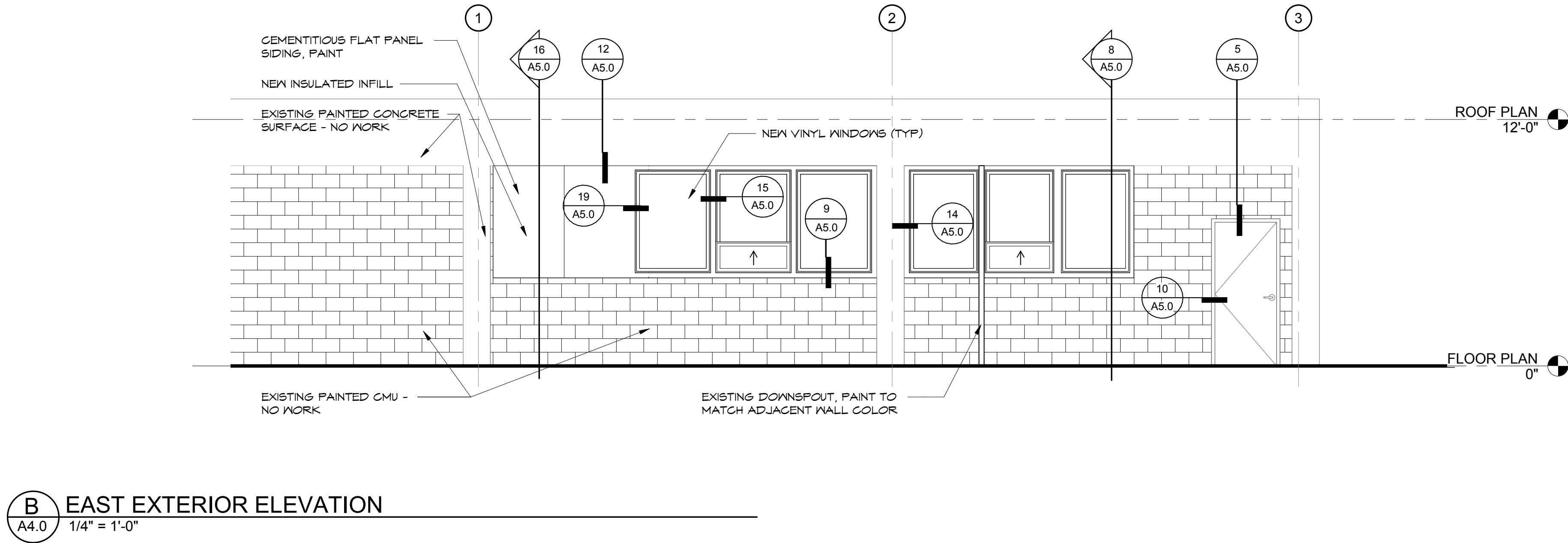
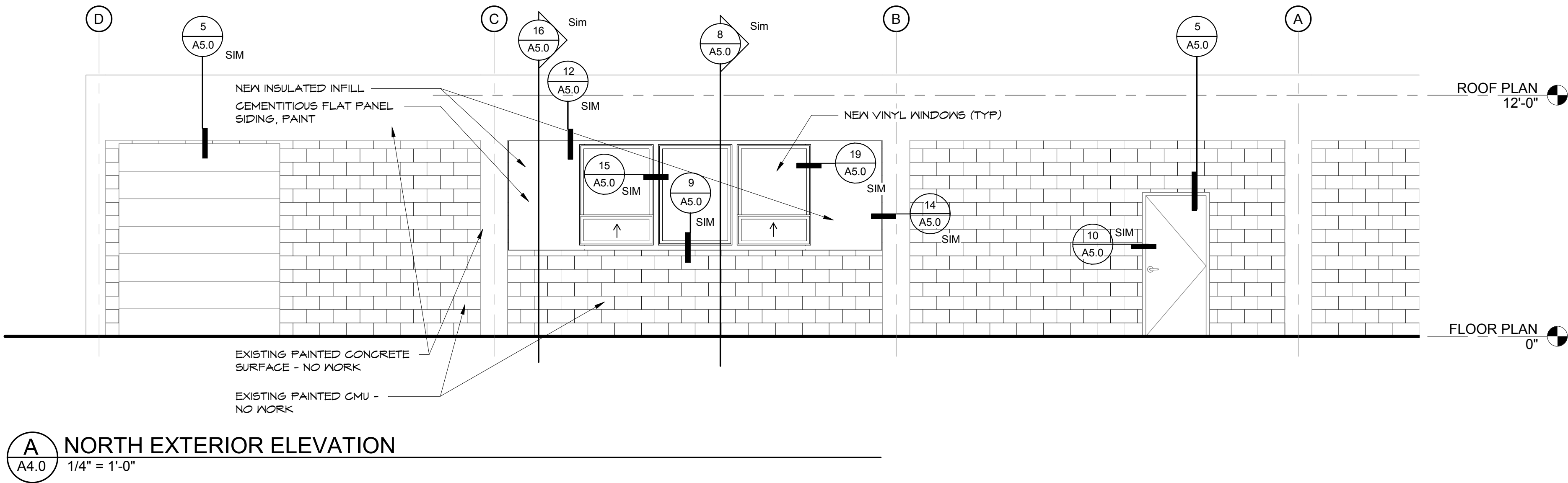
REGISTERED ARCHITECT
CRAIG M. COLLINS
STATE OF WASHINGTON

**MARK MORRIS H.S.
SHOP CLASSROOM REMODEL**
1602 MARK MORRIS CT, LONGVIEW, WA 98632

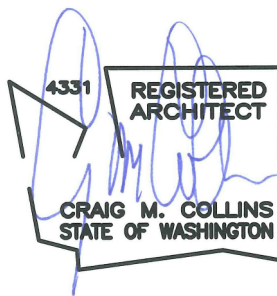
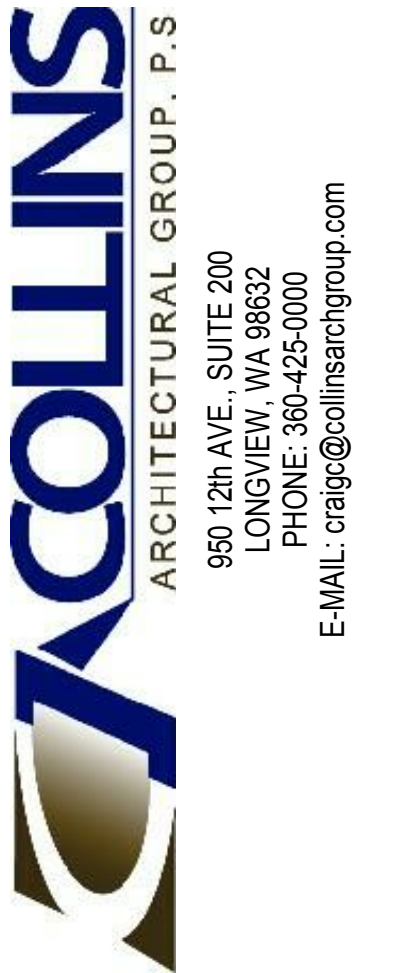
BID SET
6/22/2021

FLOOR PLAN

2021-12
SHEET NO.
A3.0



Revision Schedule		
#	Date	Description

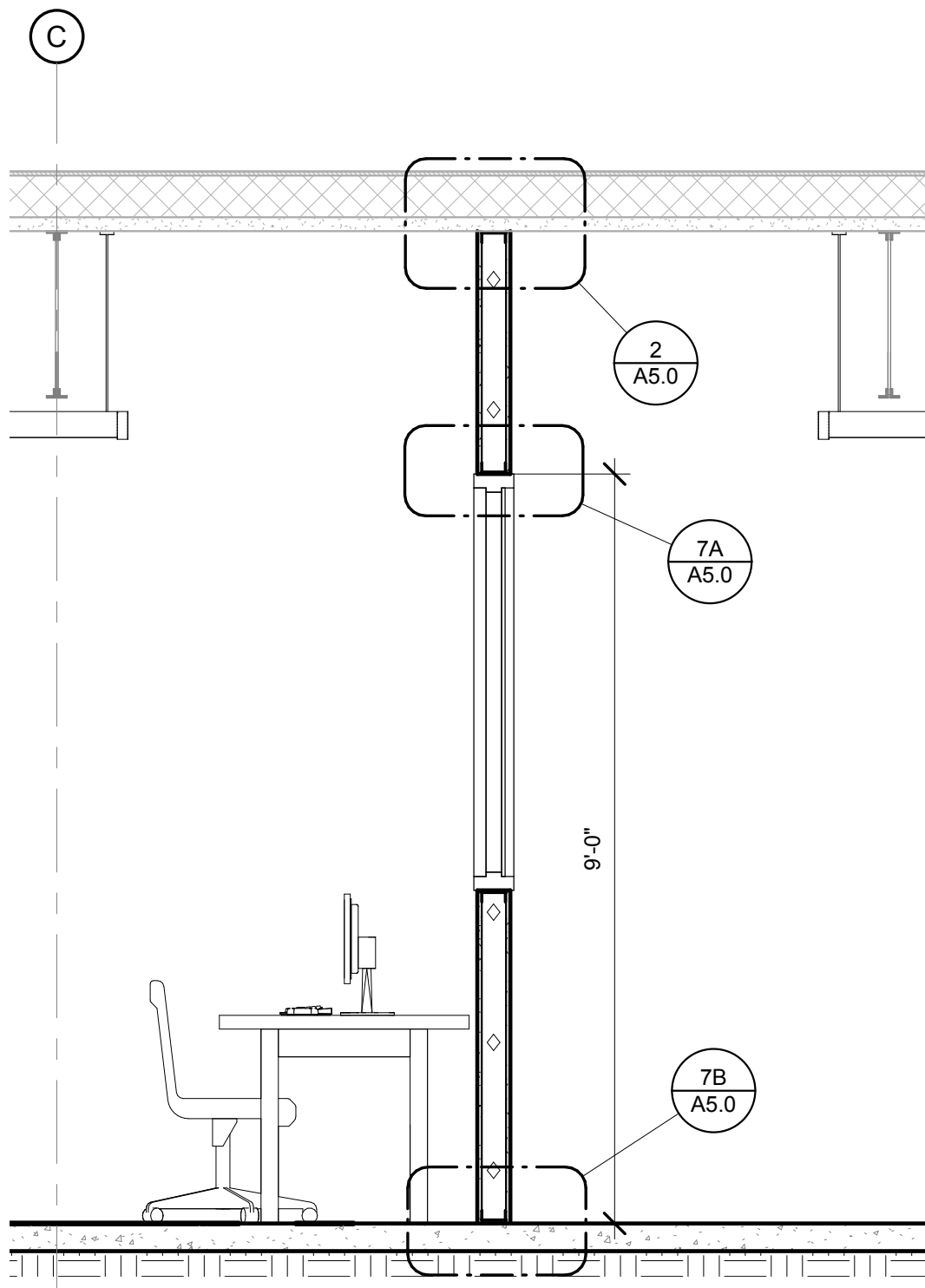


**MARK MORRIS H.S.
SHOP CLASSROOM REMODEL**
1602 MARK MORRIS CT, LONGVIEW, WA 98632

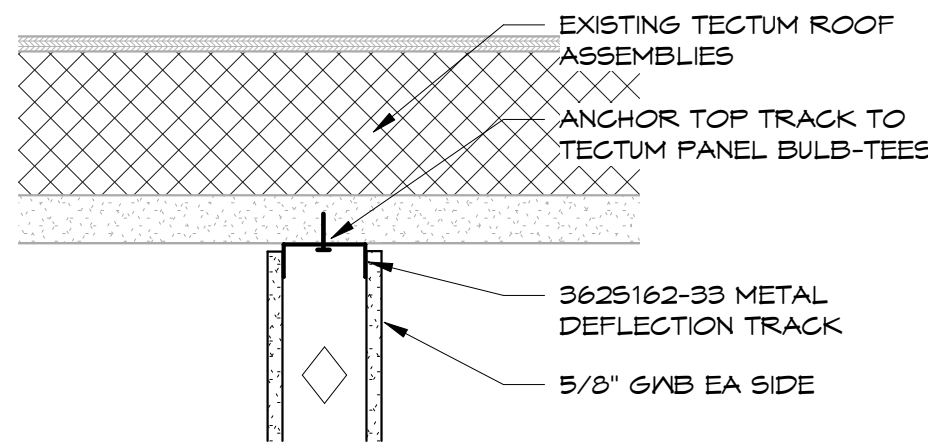
BID SET
6/22/2021

ELEVATIONS

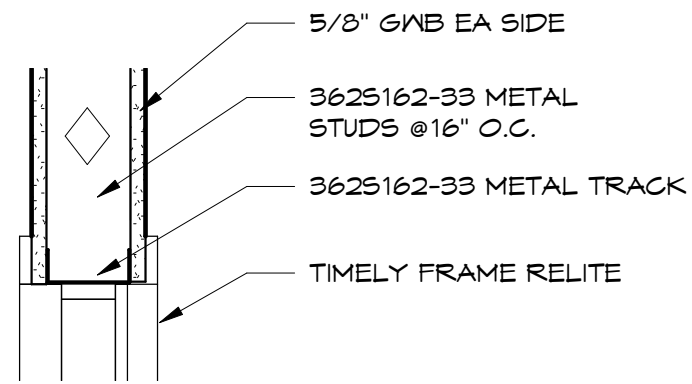
2021-12
SHEET NO.
A4.0



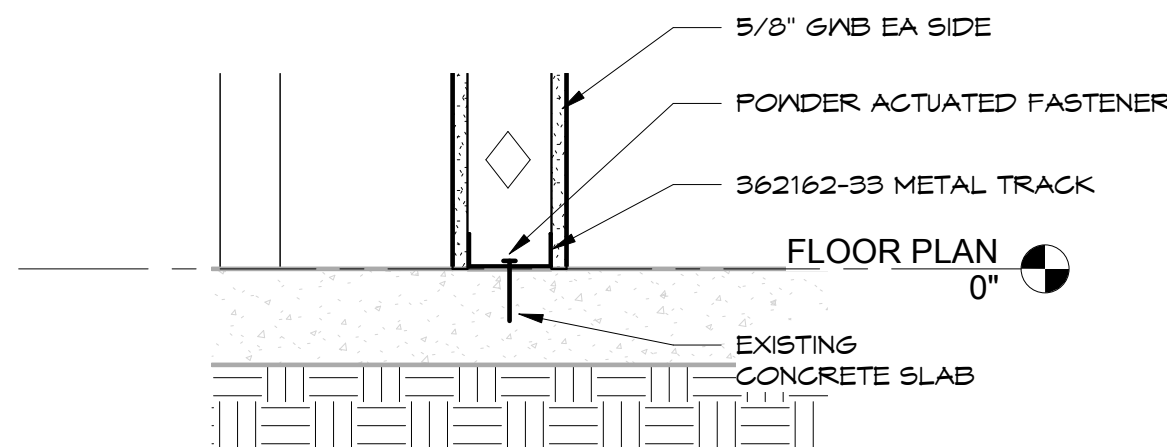
6 NEW INTERIOR WALL
A5.0 1/2" = 1'-0"



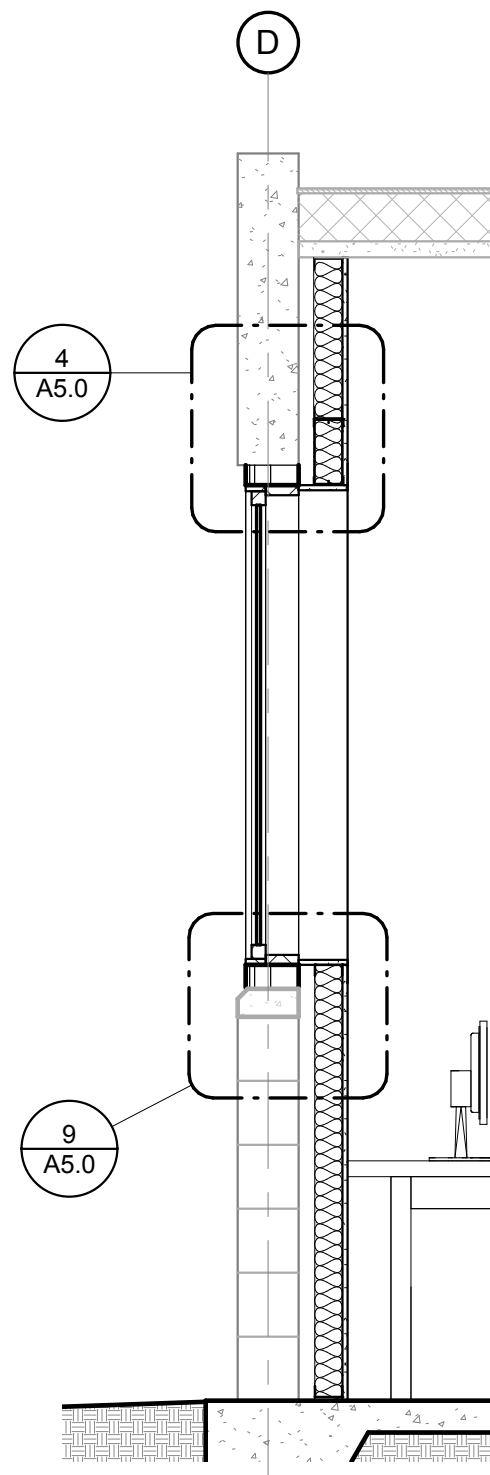
2 TOP CONNECTION OF INTERIOR WALL
A5.0 1 1/2" = 1'-0"



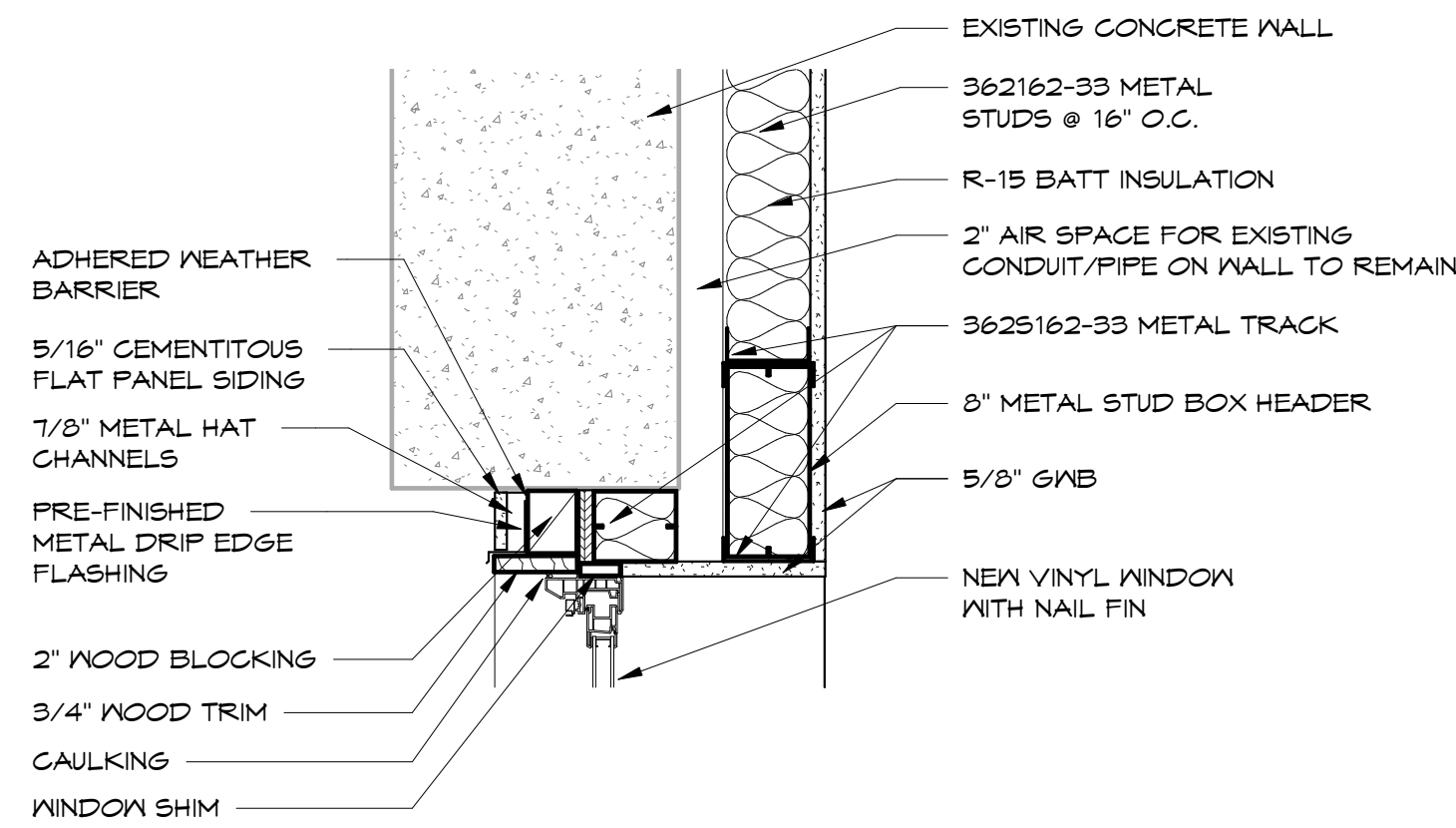
7A WINDOW HEADER/SILL DETIAL
A5.0 1 1/2" = 1'-0"



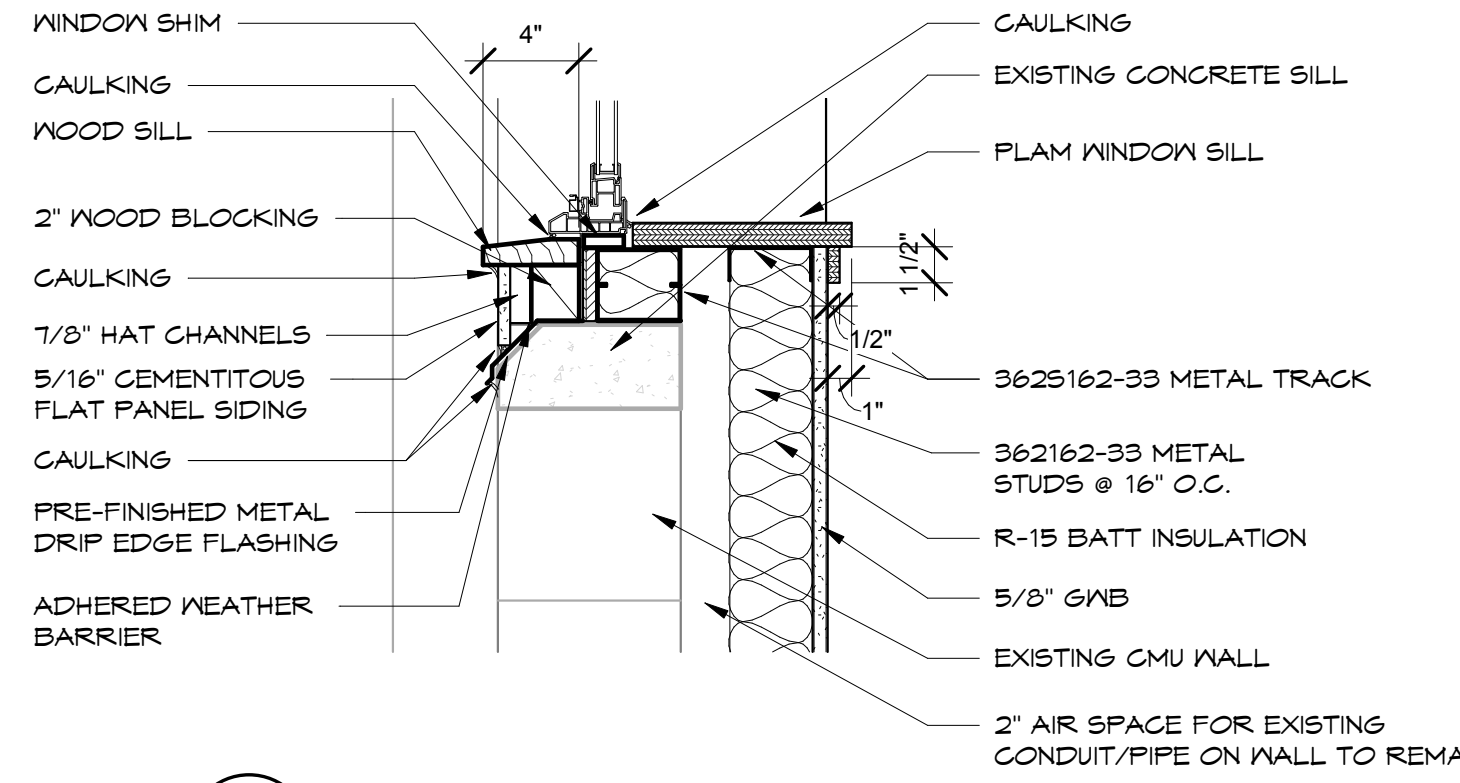
7B BASE CONNECTION OF INTERIOR WALL
A5.0 1 1/2" = 1'-0"



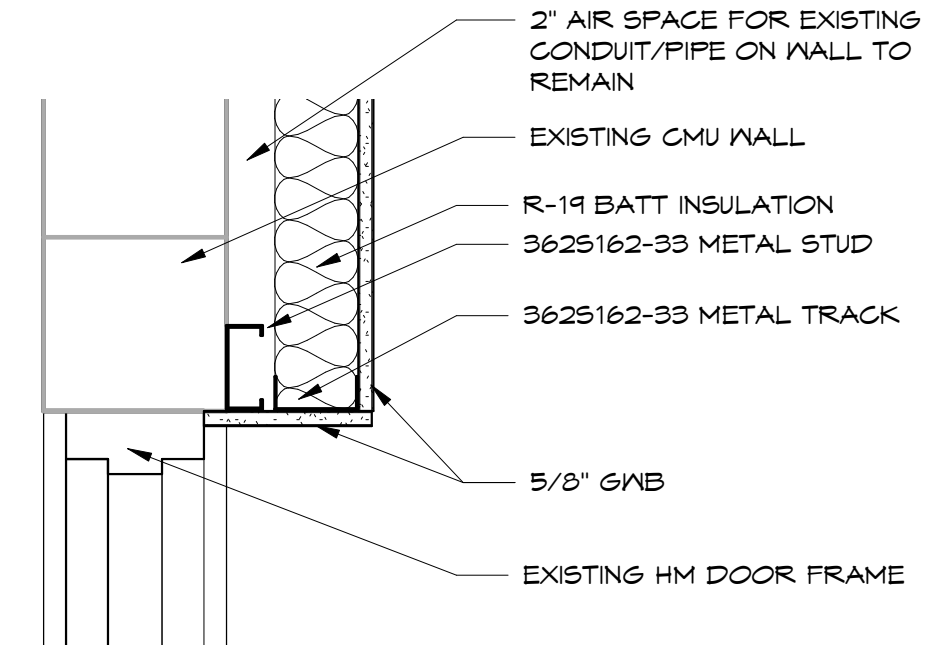
8 NEW WINDOW FURRING SECTION
A5.0 1/2" = 1'-0"



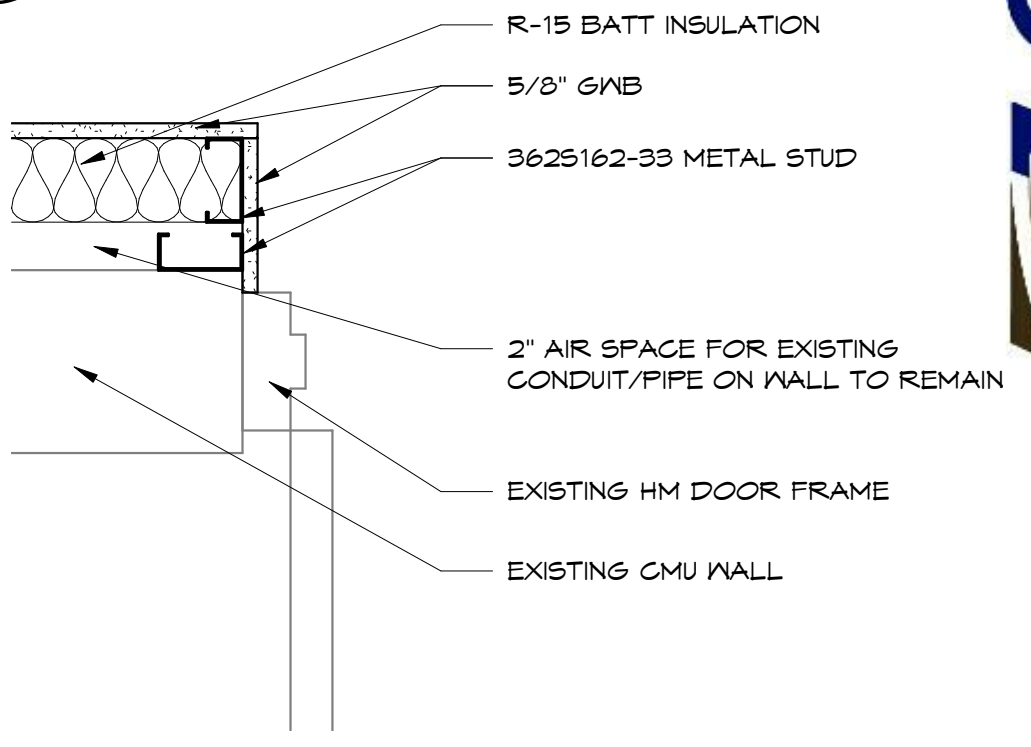
4 WINDOW FURRING HEADER
A5.0 1 1/2" = 1'-0"



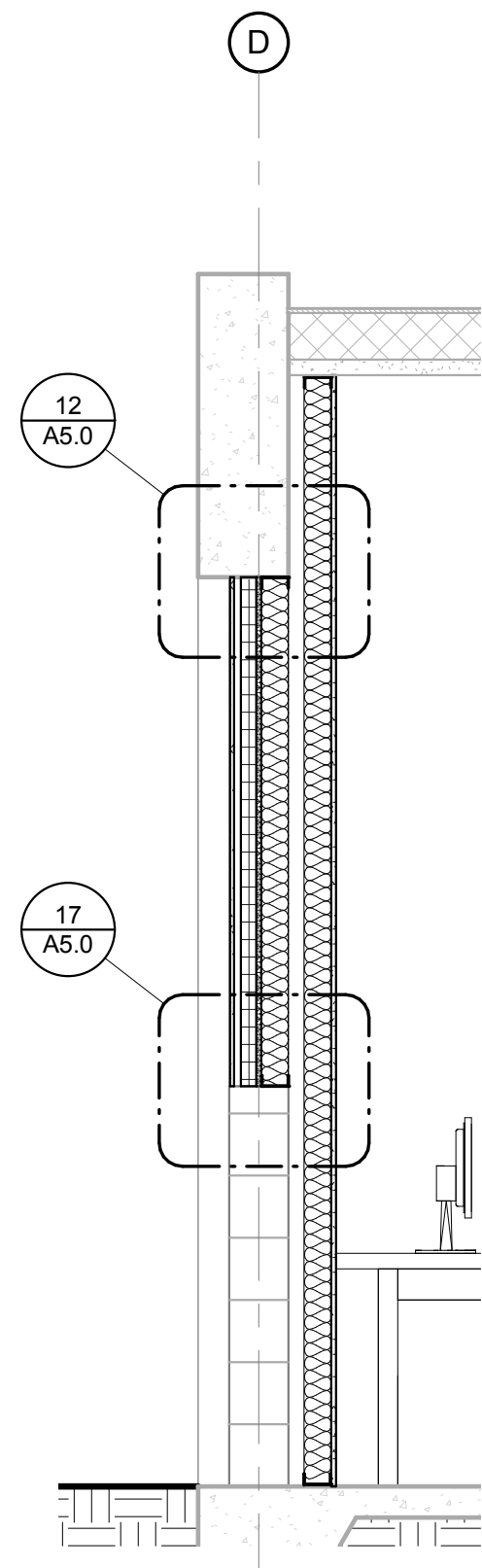
9 WINDOW SILL DETAIL
A5.0 1 1/2" = 1'-0"



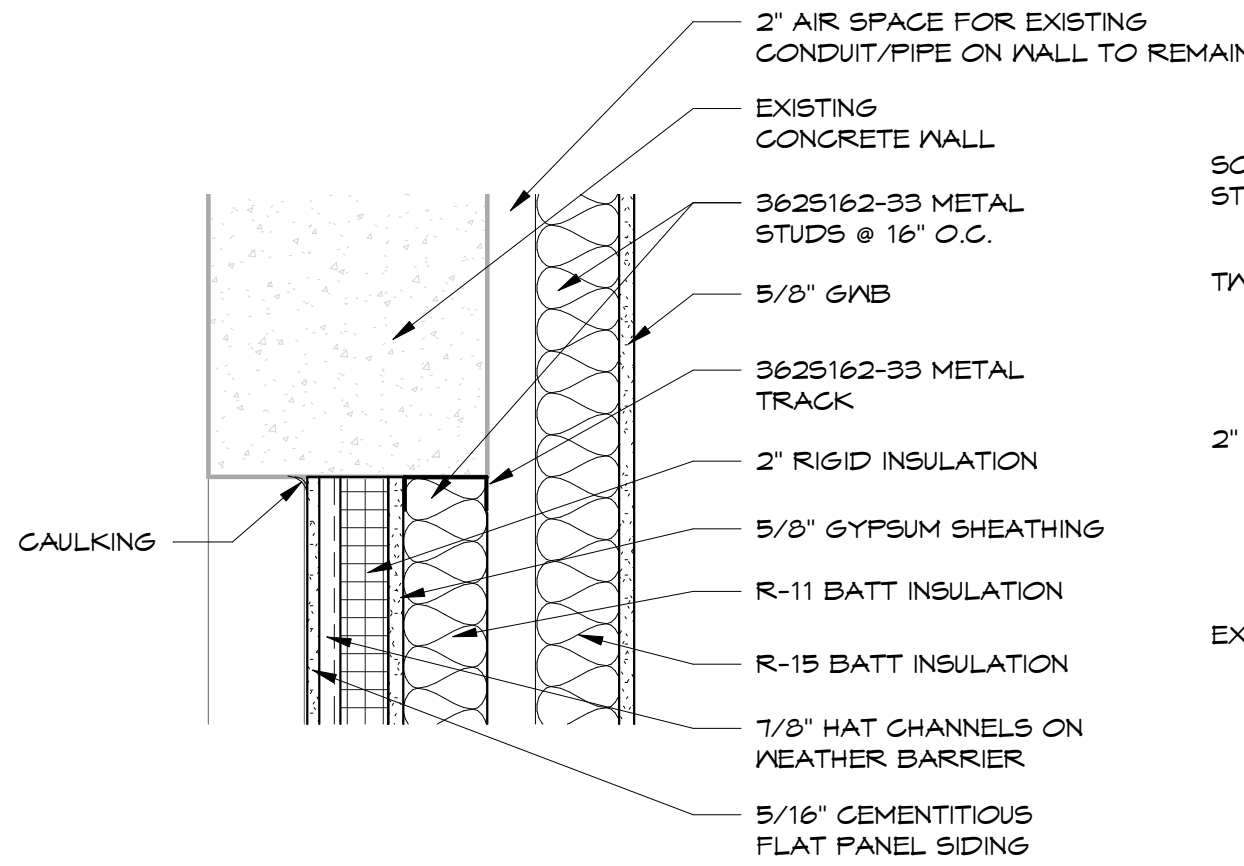
5 DOOR HEAD FURRING DETAIL
A5.0 1 1/2" = 1'-0"



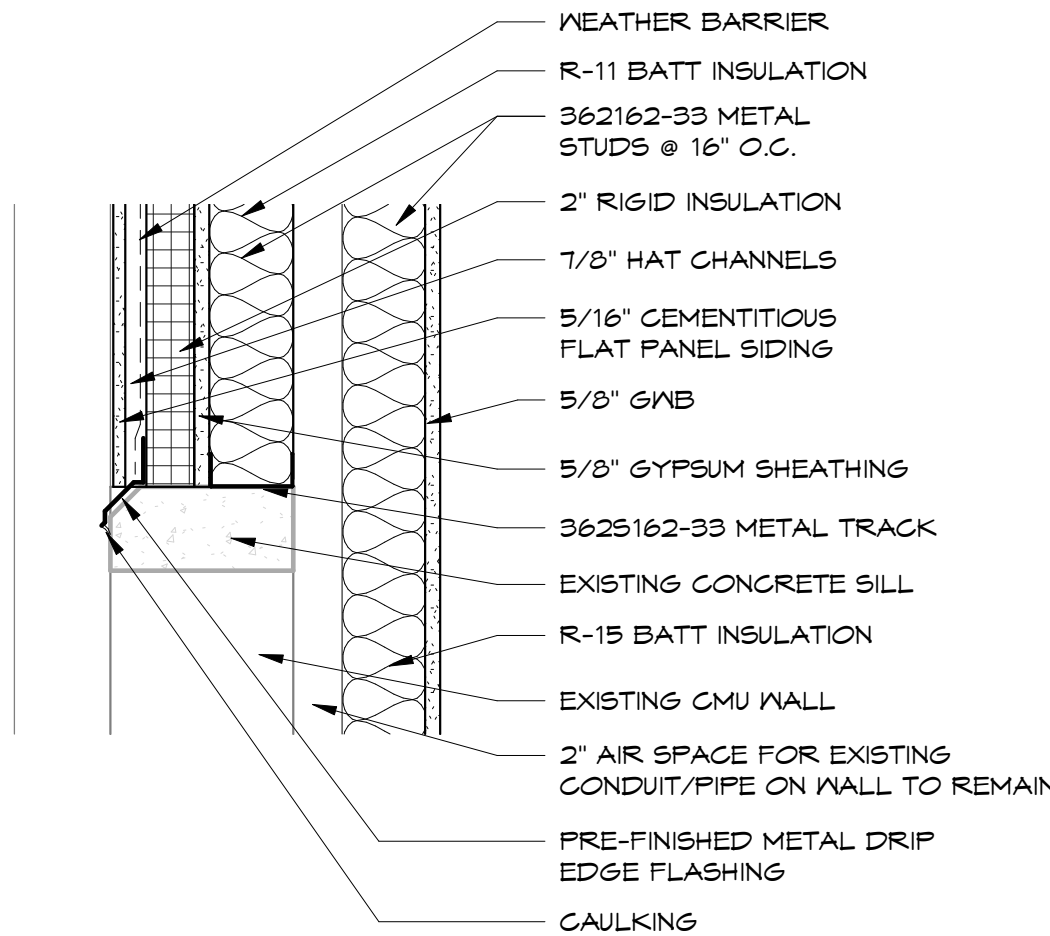
10 DOOR JAMB DETAIL (TYP)
A5.0 1 1/2" = 1'-0"



16 WINDOW INFILL SECTION
A5.0 1/2" = 1'-0"

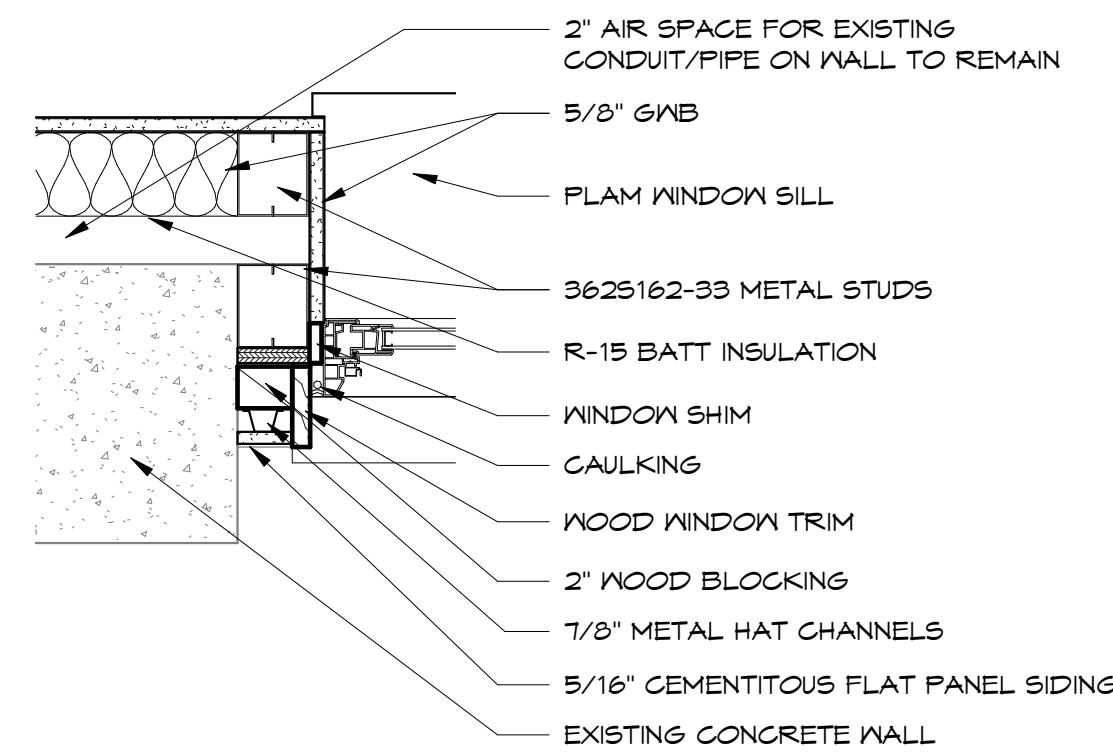


12 WINDOW INFILL HEAD
A5.0 1 1/2" = 1'-0"

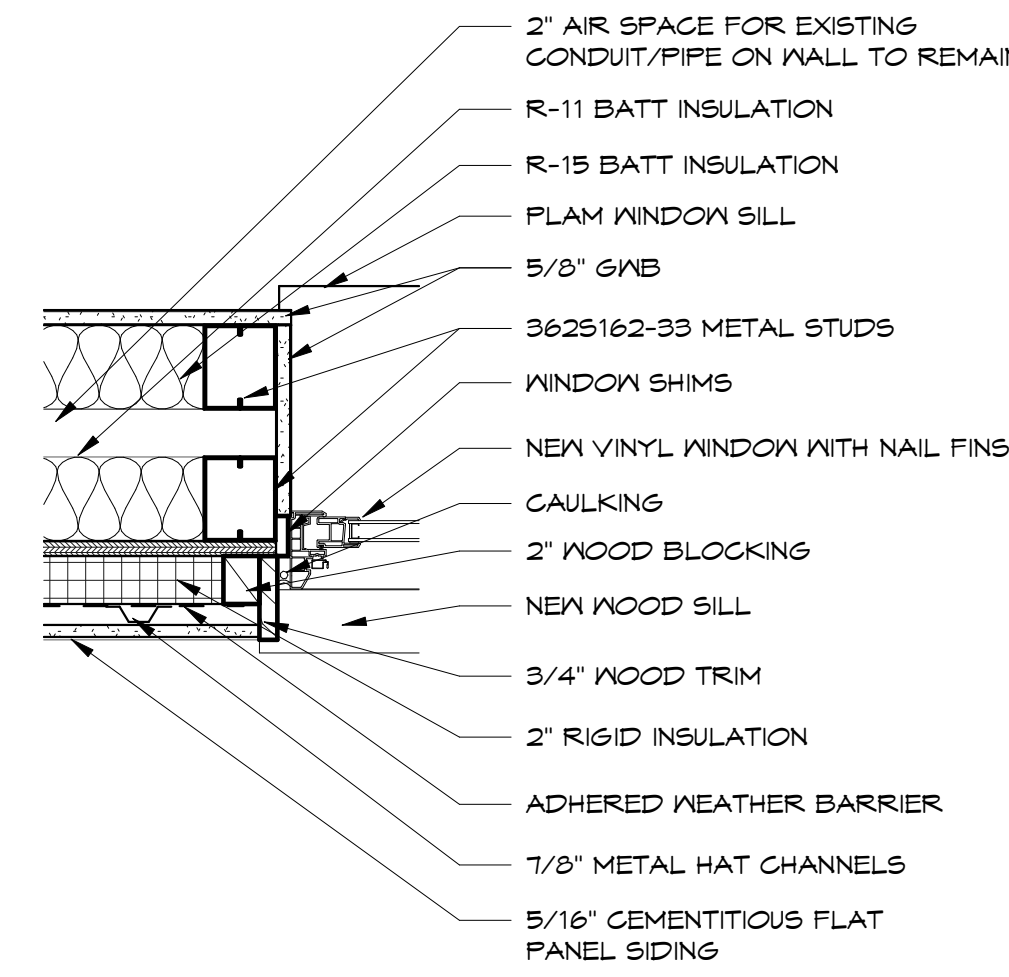


17 WINDOW INFILL SILL
A5.0 1 1/2" = 1'-0"

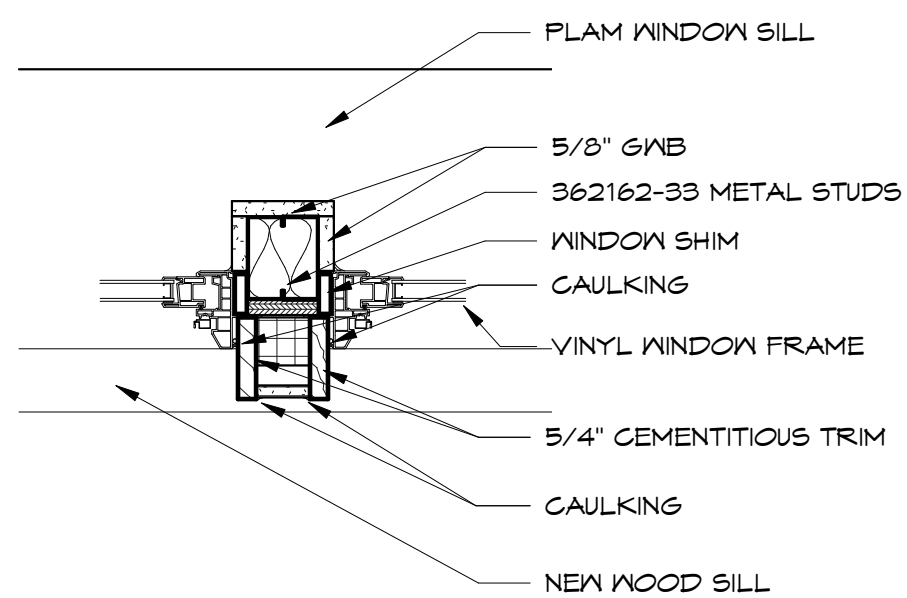
13 ACOUSTICAL FURRING
A5.0 1 1/2" = 1'-0"



14 WINDOW JAMB AT EXISTING CONCRETE WALL
A5.0 1 1/2" = 1'-0"



19 WINDOW JAMB AT WINDOW INFILL
A5.0 1 1/2" = 1'-0"



15 WINDOW MULLION DETAIL
A5.0 1 1/2" = 1'-0"

Revision Schedule		
#	Date	Description

COLLINS
ARCHITECTURAL GROUP, P.S.
950 12th AVE., SUITE 200
LONGVIEW, WA 98632
PHONE: 360-425-0000
E-MAIL: craig@collinsarchgroup.com

REGISTERED ARCHITECT
CRAIG M. COLLINS
STATE OF WASHINGTON

MARK MORRIS H.S.
SHOP CLASSROOM REMODEL
1602 MARK MORRIS CT, LONGVIEW, WA 98632

BID SET
6/22/2021

DETAILS

2021-12
SHEET NO.
A5.0

PLOTTED: ZACH SICHLEY 6/23/2021 9:37 AM
 X:\DWG\CA\5671\5671M1.0

ROOF HOOD							
SYMBOL MARK	DESCRIPTION	SERVICE	CFM	THROAT SIZE		THROAT VELOCITY (FPM)	WEIGHT (LBS)
				WIDTH (IN)	LENGTH (IN)		
OA-H-1	OUTSIDE AIR INTAKE HOOD	ERV	700	14.5	6.25	1,112	41
EH-1	EXHAUST HOOD	ERV	700	14.5	6.25	1,112	41
NOTES: 1 DESIGN BASIS: GREENHECK AS-12-420-A4 2 DESIGN BASIS: GREENHECK AE-12-433-B6 3 PROVIDE CLASS 1A MOTORIZED DAMPER							

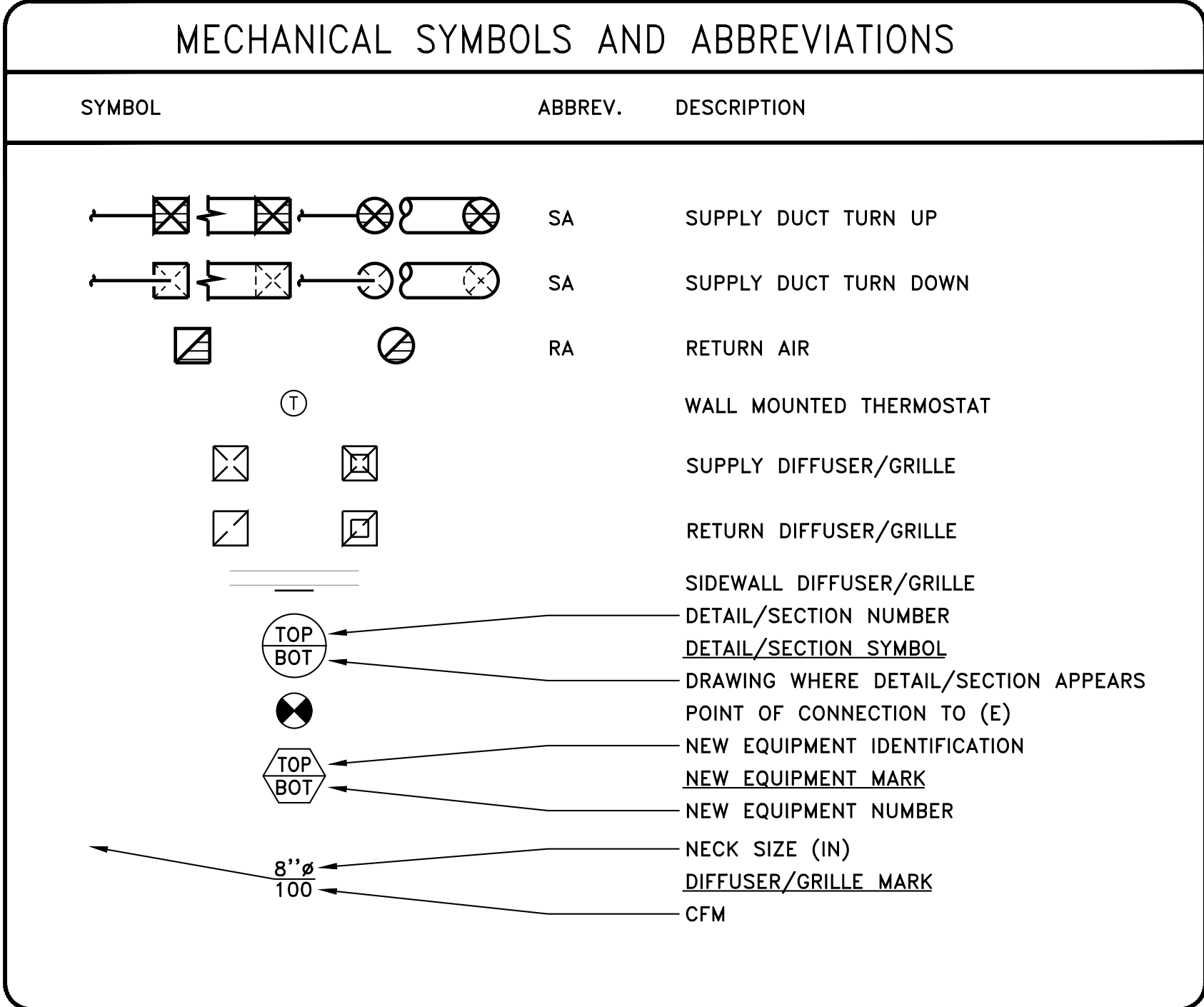
DIFFUSER, REGISTER, AND GRILLE SCHEDULE							
SYMBOL	TYPE	FACE	FRAME	DAMPER	FINISH	MODEL #	COMMENTS
SD-1	SUPPLY	ADJUSTABLE BLADES	S.S.	YES	-	PRICE 720D	12"X4"
RE-1	RETURN	FIXED LOUVER	S.S.	YES	-	PRICE 735D	24"X8"

ELECTRIC DUCT HEATER													
SYMBOL MARK	DESCRIPTION	SERVICE	CFM	VOLTAGE	PH.	KW	MCA	FLA	TSP (IN WC)	EAT (°F)	LAT (°F)	STEPS	WEIGHT (LBS)
DH-1	UNIVERSAL	ERV SUPPLY DUCT	700	208	3	3.5	9.7					SCR	
NOTES: 1 DESIGN BASIS: GREENHECK EDH-1 IDHE 2 PROVIDE SENSOR FOR CONTROL. SET DUCT TEMPERATURE TO 60°F SAT.													

ROOF TOP UNIT																			
SYMBOL MARK	DESCRIPTION	SERVICE	SUPPLY							COOLING							HEATING		
			CFM	VOLTAGE	PH.	HP	MCA	FLA	ESP (IN WC)	RPM	DRIVE	TOTAL CAPACITY (MBH)	EAT DBWB (°F)	LAT DBWB (°F)	MIN. EER	INPUT (MBH)	OUTPUT (MBH)	STAGES	MINIMUM OSA CFM
RTU-1	GAS POWERED	CTE LAB	1,800	208	3	0.25	28.0	4.5	0.50	1,888	DIRECT	70	80/ 67	56/ 54	11.0	110	88	2	1,800
NOTES: 1 DESIGN BASIS: CARRIER 48FC -M07 2 PROVIDE 100% ECONOMIZER 3 PROVIDE ADAPTER CURB TO LENNOX RMF 16-65 ROOF CURB																			

ENERGY RECOVERY VENTILATOR																			
SYMBOL MARK	DESCRIPTION	SERVICE	SUPPLY FAN							EXHAUST FAN							EFFECTIVENESS (NOTE 1)		
			CFM	VOLTAGE	PH.	HP	MCA	FLA	ESP (IN WC)	DRIVE	CFM	VOLTAGE	PH.	HP	MCA	FLA	ESP (IN WC)	DRIVE	WINTER TOTAL
ERV-1	ELECTRIC UNIT	CTE LAB	700	115	1	0.75	19.8	12.0	0.50	DIRECT	700	115	1	0.75	19.8	12.0	0.50	DIRECT	64%
NOTES: 1 BASED ON AHRI 1060 STANDARD CONDITIONS. 2 PROVIDE UNIT WITH EC MOTORS. PROVIDE MOTORIZED DAMPERS AT OSA AND EXH. INTERLOCK WITH OA AND EA DAMPERS. DAMPERS TO OPEN WHEN UNIT IS ENERGIZED. 3 DESIGN BASIS: GREENHECK MINICORE-10-VG-FM																			

OUTSIDE AIR VENTILATION SINGLE ZONE SYSTEMS																	
ROOM DESCRIPTION	A _V ROOM AREA (SF)	OCCUPANCY CLASSIFICATION	OCCUPANT DENSITY (PEOPLE/1000 SF)	CODE MAX. OCCUPANCY (PEOPLE)	P ₂ ACTUAL OCCUPANCY (PEOPLE)	R ₀ VENTILATION FACTOR (CFM/PERSON)	R _A AREA OUTDOOR AIR RATE (CFM/SF)	V ₅₂ BREATHING ZONE VENTILATION (CFM)	E _z AIR DISTRIBUTION EFFECTIVENESS	V ₅₂ ZONE OUTDOOR AIRFLOW (CFM)	EXHAUST AIRFLOW RATE (CFM/SF)	EXHAUST AIRFLOW RATE (CFM/UNIT)	EXHAUST AIRFLOW (CFM)	NATURAL VENTILATION			COMMENTS
														YES OR NO	AREA REQUIRED (SF)	AREA AVAILABLE (SF)	
CAD ROOM	2,031	EDUCATION - COMPUTER LAB	25	51	30	10	0.12	544	0.8	680	0.00	0	0	NO	N/A	0	
OFFICE	114	OFFICE - OFFICE SPACE	5	1	1	5	0.06	12	0.8	15	0.00	0	0	NO	N/A	0	
STORAGE 1	154	MISCELLANEOUS	0	0	0	0	0.00	0	0.8	0	0.00	0	0	NO	N/A	0	
SYSTEMS SERVING ROOMS:		1															
OSA FLOW RATE (CFM) V ₀₇ :		695															
EXH FLOW RATE (CFM):		0															
NOTES:																	
1 VENTILATION CALCULATION PERFORMED PER THE 2019 OREGON MECHANICAL SPECIALTY CODE																	
2 ACTUAL OCCUPANCY PER STUDENT CLASS SIZE																	



DRAWING INDEX	
DWG.	DESCRIPTION
M1.0	MECHANICAL SCHEDULES
M2.0	CTE LAB – DEMO PLAN
M2.1	CTE LAB – HVAC PLAN
M5.1	MECHANICAL DETAIL SHEET

CONTROLS NOTES:

- THE BUILDING HAS A BMS PROVIDED BY DELTA CONNECTS. THE GC/MC ARE TO PROVIDE AND COORDINATE THE INSTALLATION OF NEW WORK WITH DELTA CONNECTS. CONTACT INFORMATION: MATT AXTELL, 206–730–5671, MAXTELL@DELTACONNECTS.COM
- CONTROLS CONTRACTOR IS TO PROVIDE ALL NECESSARY EQUIPMENT, SENSORS, WIRING, AND THE LIKE FOR A COMPLETE FUNCTIONING SYSTEM.
- EXISTING RTU CONTROL POINTS AND SEQUENCE OF OPERATIONS ARE TO REMAIN.
- ERV IS TO OPERATE DURING ALL OCCUPIED HOURS AS SET BY THE BMS OCCUPANCY SCHEDULE. ON PROOF OF DAMPERS OPENING THE ERV WILL BE ENABLED. DAMPER ACTUATORS ARE TO BE CONTROLLED BY THE BMS.
- PROVIDE A SAT SENSOR IN ERV SUPPLY DUCT, DOWNSTREAM OF THE ELECTRIC DUCT HEATER, TO MONITOR SAT THROUGH THE BMS. IF TEMPERATURE FALLS BELOW 45 DEG F SINGLE ALARM AND SHUTDOWN ERV AND CLOSE DAMPERS.

Revision Schedule		
#	Date	Description



06/23/2021

LPS - MARK MORRIS
 SHOP CLASSROOM REMODEL
 1602 MARK MORRIS CT, LONGVIEW, WA 98632

BID SET
 06/22/2021

MECHANICAL
 SCHEDULES

2021-12

SHEET NO.

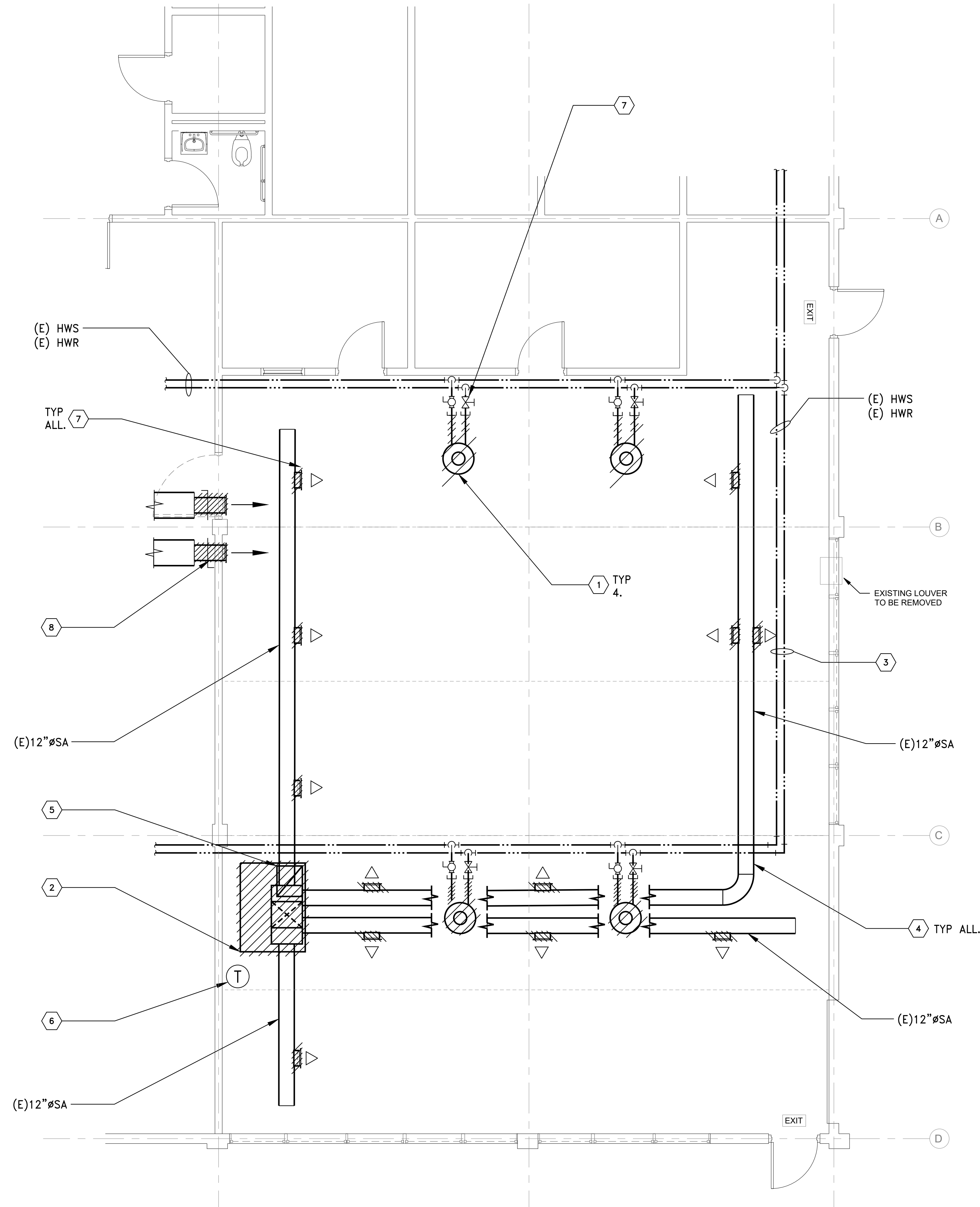
M1.0

6915 S MACADAM AVE
 SUITE 200
 PORTLAND, OREGON 97219
 PHONE: (503) 892–1188

CONTACT: RICK DUSA/ZACH SICHLEY
 ENGINEERING@MKE–INC.COM



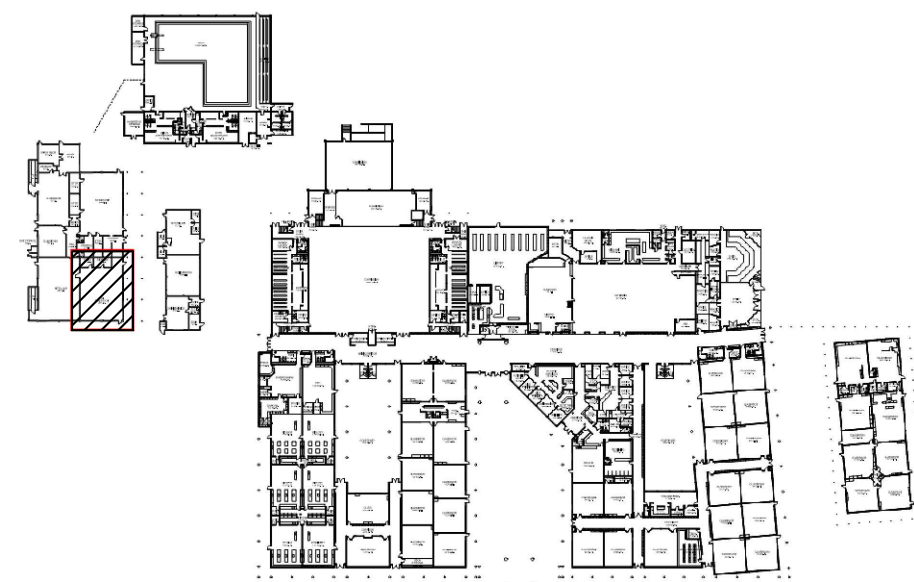
PLOTTED: ZACH SICHLEY 6/23/2021 9:23 AM
X:\DWG\CA\5671\5671M2.0



1 CTE LAB - DEMO PLAN
SCALE: 1/4"=1'-0"

KEYED NOTES:

1. REMOVE UNIT HEATERS AND CAP EXISTING HYDRONIC PIPING. SAVE EXISTING UNIT HEATERS FOR MAINTNANCE AS PARTS FOR UNIT HEATERS IN OTHER ROOMS.
2. REMOVE ROOF TOP UNIT, AND GAS PIPE FROM EXISTING UNIT IN PREPARATION FOR NEW RTU. PATCH AND REPAIR ROOF AS NEEDED WITH NEW RTU.
3. EXISTING HWS AND HWR ARE TO REMAIN UP HIGH IN JOIST SPACE TO SERVE OTHER ROOM HYDRONIC UNIT HEATERS.
4. EXISTING DUCT WORK IS TO REMAIN FOR USE WITH NEW RTU.
5. EXISTING EGG CRATE RETURN AND SUPPLY DUCT DROP TO REMAIN FOR USE WITH NEW RTU.
6. CONTROLS FROM THE EXISTING RTU ARE TO REMAIN FOR USE WITH THE NEW RTU.
7. EXISTING GRILLES TO BE REMOVED IN PREPARATION FOR NEW GRILLES.
8. EXISTING GRILLES TO BE REMOVED, HOLE IN WALL TO BE PATCHED. EXISTING 12"x10" DUCT TO BE REMOVED AND CAPPED AT EXISTING 20"x18" DUCT TRANSITION.



6915 S MACADAM AVE
SUITE 200
PORTLAND, OREGON 97219
PHONE: (503) 892-1188
CONTACT: RICK DUSA/ZACH SICHLEY
ENGINEERING@MKE-INC.COM



Revision Schedule		
#	Date	Description

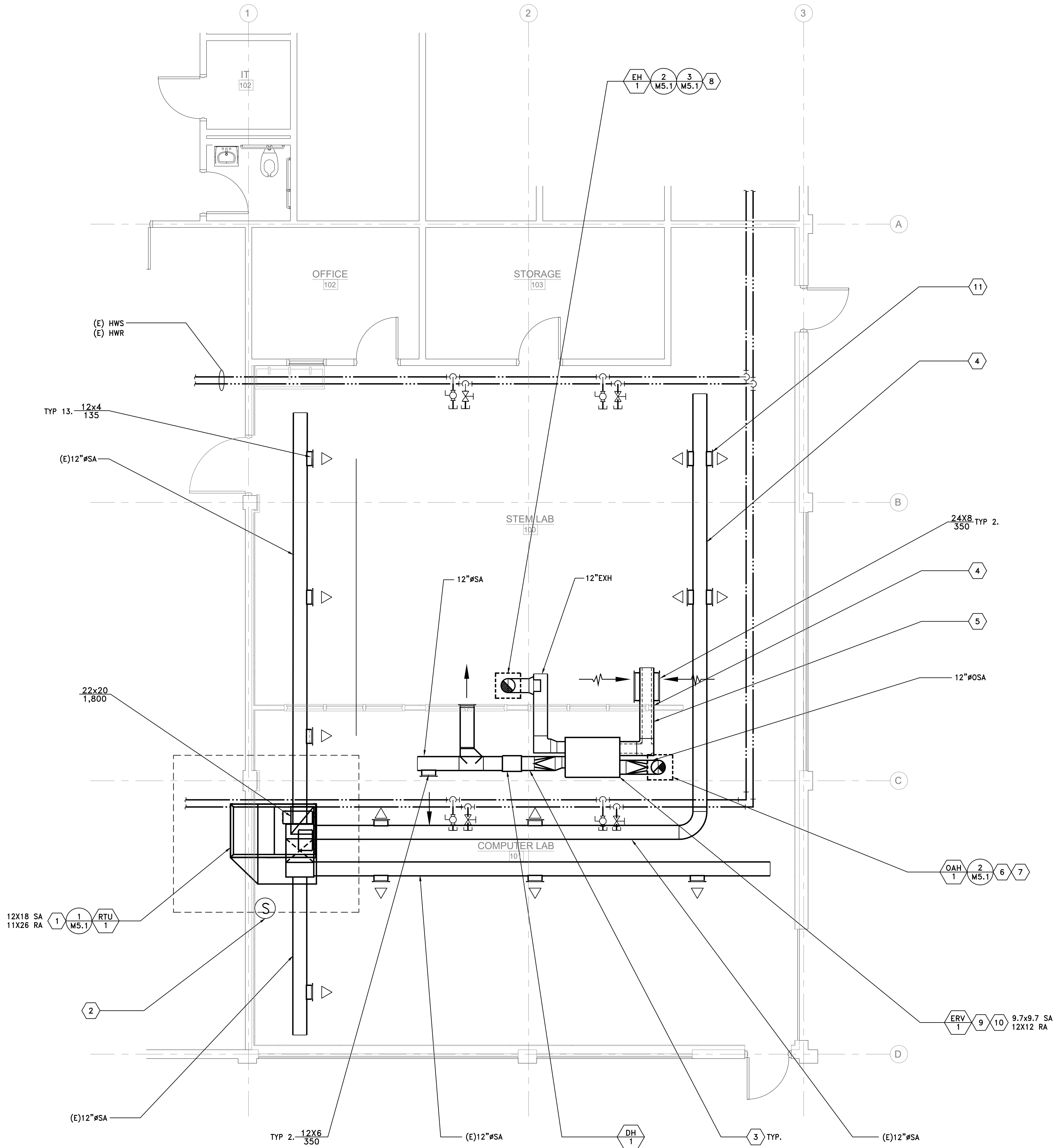


LPS - MARK MORRIS
SHOP CLASSROOM REMODEL
1602 MARK MORRIS CT, LONGVIEW, WA 98632

BID SET
06/22/2021
SHOP DEMO
PLAN

2021-12
SHEET NO.
M2.0

PLOTTED: ZACH SICHLEY 6/23/2021 9:24 AM
X: \\DWG\CA\5671\5671M2.1



1 CTE LAB - HVAC PLAN
SCALE: 1/4"=1'-0"

GENERAL NOTES:

- EXISTING ROOF HAS TECTUM DECK. SUPPORT DUCT FROM UNI-STRUT SPANNING JOISTS
- RECONNECT (E) GAS ON ROOF TO NEW RTU-1.

KEYED NOTES:

- MOUNT NEW RTU ON ADAPTER CURB.
- EXISTING WALL MOUNTED SENSOR. CONTROLS CONTRACTOR TO INSTALL NEW CONTROLS AND MAINTAIN EXISTING POINTS AND SEQUENCE OF OPERATION.
- ROUTE DUCTWORK FROM ERV THROUGH CROSS BRACING.
- DUCT TO BE INSTALLED ABOVE NEW WALL ADDITION.
- INTERNALLY LINE DUCT TO REDUCE NOISE IN CLASSROOM.
- OUTSIDE AIR INTAKE IS TO BE 10' FROM HOOD EXHAUSTS.
- ROOF HOOD TO PROVIDE OUTSIDE AIR INTAKE TO ERV UNIT.
- ROOF HOOD TO PROVIDE EXHAUST FROM THE ERV UNIT.
- ERV TO BE IN CEILING SPACE, SUPPORTED BY STRUT ACROSS JOIST.
- ERV-1 TO BE INSTALLED AT A HEIGHT OF 9' 11" ABOVE FINISHED FLOOR.
- CUT HOLE IN EXISTING DUCT. ADD EXTRUSION TO MATCH EXISTING FOR NEW SUPPLY GRILLE.
- NEW ROOF CURB ADAPTER TO BE PLACED ON EXISTING ROOF CURB.

Revision Schedule		
#	Date	Description



LPS - MARK MORRIS SHOP CLASSROOM REMODEL

1602 MARK MORRIS CT, LONGVIEW, WA 98632

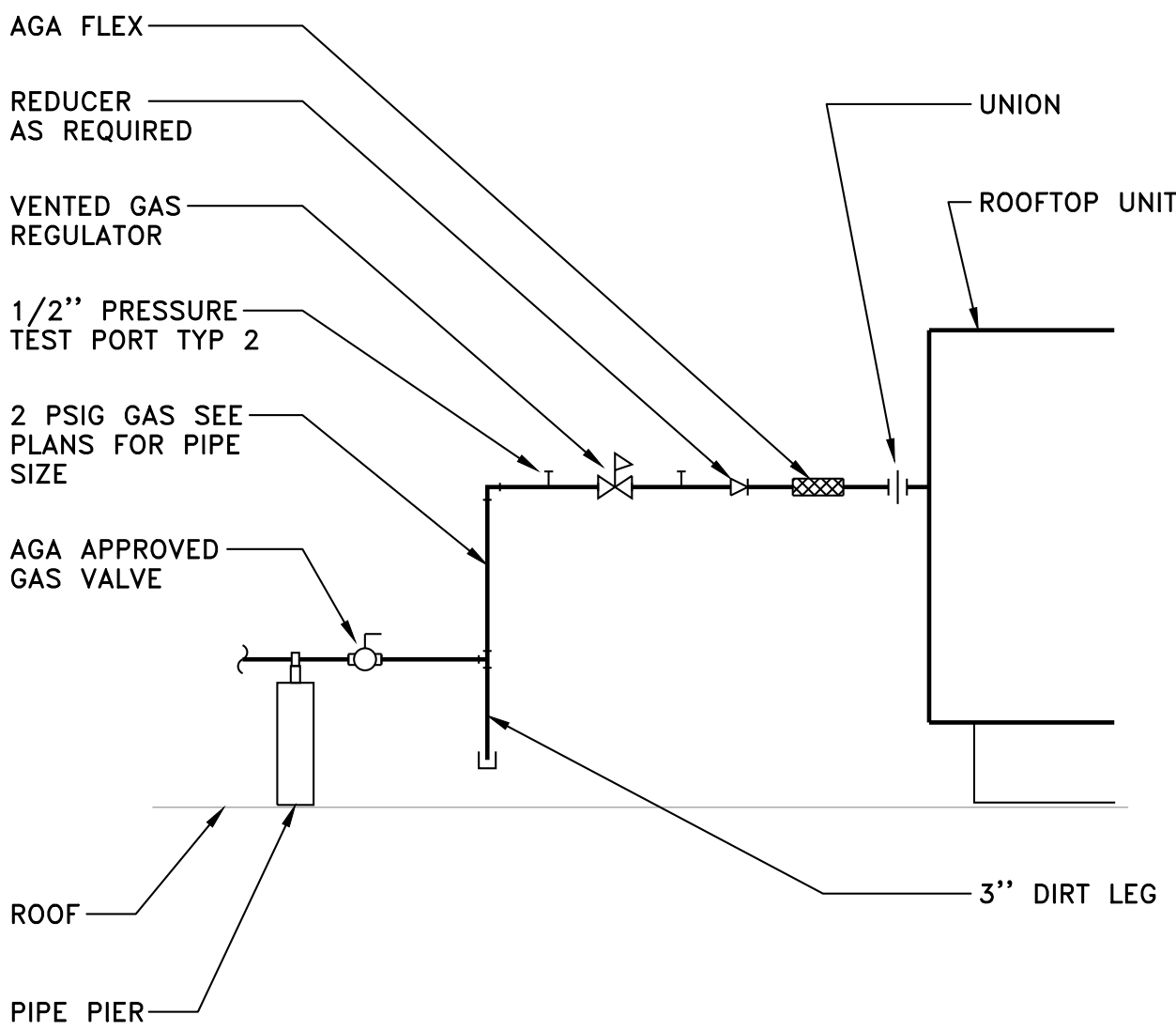
BID SET
06/22/2021

SHOP HVAC
PLAN

2021-12
SHEET NO.

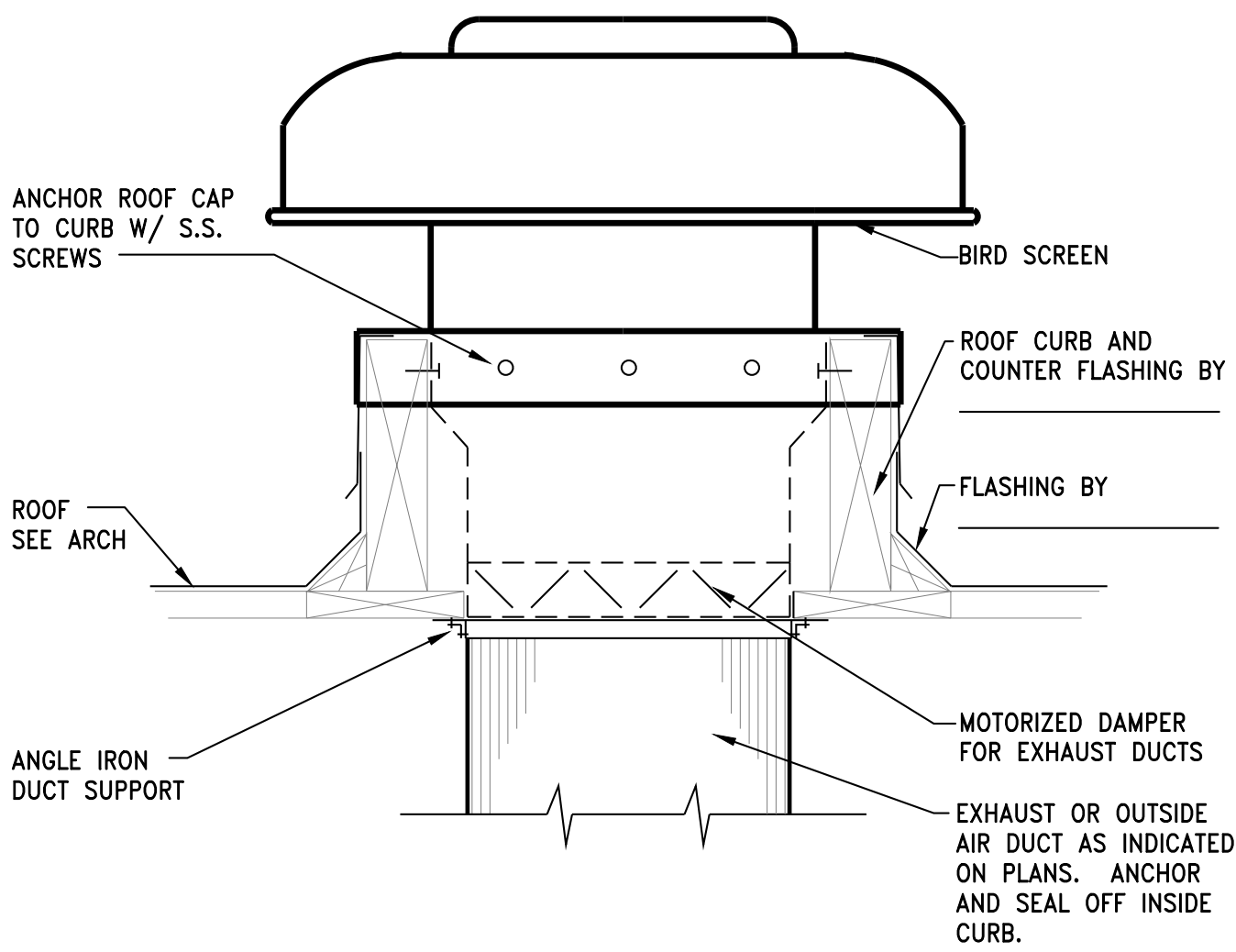
M2.1

PLOTTED: ZACH SICHLEY 6/23/2021 9:37 AM
X:\DWG\CA\5671\5671M5.1



1
M5.1

DETAIL –
ROOFTOP EQUIPMENT GAS PIPING
SCALE: N.T.S. PDL01



2
M5.1

DETAIL – ROOF HOOD
SCALE: N.T.S. MDA09

Revision Schedule		
#	Date	Description



06/23/2021

LPS - MARK MORRIS
SHOP CLASSROOM REMODEL
1602 MARK MORRIS CT, LONGVIEW, WA 98632

BID SET
06/22/2021

MECH DETAILS

2021-12
SHEET NO.

M5.1

ELECTRICAL SYMBOLS

SOME SYMBOLS MAY NOT APPEAR ON DRAWINGS

<table border="0"><tr><td>-----</td><td>BRANCH CIRCUIT IN WALL OR CEILING</td></tr><tr><td>- - - - -</td><td>BRANCH CIRCUIT EXPOSED</td></tr><tr><td>-----</td><td>BRANCH CIRCUIT IN FLOOR OR EARTH</td></tr><tr><td>- - - - -</td><td>BRANCH CIRCUIT EXISTING</td></tr><tr><td>-----</td><td>UNDERGROUND PRIMARY</td></tr><tr><td>HV ----- HV</td><td>PWR LINE PWR</td></tr><tr><td>PWR ----- PWR</td><td>EMERGENCY CIRCUIT EMR</td></tr><tr><td>EMR ----- EMR</td><td>TELEPHONE LINE TEL</td></tr><tr><td>TEL ----- TEL</td><td>WIRE MOLD WM</td></tr><tr><td>WM ----- WM</td><td>DATA DA</td></tr><tr><td>DA ----- DA</td><td></td></tr></table> <table border="0"><tr><td>(E) ⊕</td><td>DARKER LINES INDICATE NEW LIGHTER LINES W/ (<) INDICATE EXISTING</td></tr><tr><td> </td><td>HASH MARK = HARD WIRED GROUND</td></tr><tr><td> </td><td>HASH MARKS = # OF WIRES < NO HASH MARKS = 2 WIRES + 1 GRND</td></tr><tr><td> </td><td>HASH MARKS = # OF WIRES W/ HARD WIRED GROUND</td></tr></table> <table border="0"><tr><td>[Symbol]</td><td>LIGHTING FIXTURE-2' X2' OR 2' X4' RECESSED MOUNT</td></tr><tr><td>[Symbol]</td><td>LIGHTING FIXTURE-2' X2' OR 2' X4'-SURFACE MOUNT</td></tr><tr><td>[Symbol]</td><td>LIGHTING FIXTURE-2' X2' OR 2' X4'-W/ EMERGENCY BATTERY INVERTER</td></tr><tr><td>[Symbol]</td><td>LIGHTING FIXTURE-2' X2' OR 2' X4'-ON EMERGENCY CIRCUIT</td></tr><tr><td>[Symbol]</td><td>LIGHTING FIXTURE-2' X2' OR 2' X4' EXISTING SHOWN DOTTED (TYPICAL TO REMOVE)</td></tr><tr><td>[Symbol]</td><td>LIGHTING FIXTURE-2' X2' OR 2' X4' EXISTING SHOWN LIGHT LINED (<) (TYPICAL TO REMAIN)</td></tr><tr><td>[Symbol]</td><td>LIGHTING FIXTURE - STRIP / SURFACE MOUNT 2' X4'</td></tr><tr><td>[Symbol]</td><td>LIGHTING FIXTURE - STRIP / SURFACE MOUNT 2' X4' SHOWN DOTTED (TYPICAL TO REMOVE)</td></tr><tr><td>[Symbol]</td><td>LIGHTING FIXTURE-WALL MOUNT</td></tr><tr><td>[Symbol]</td><td>LIGHTING FIXTURE-RECESSED</td></tr><tr><td>[Symbol]</td><td>LIGHT/FAN FIXTURE-RECESSED</td></tr><tr><td>[Symbol]</td><td>LIGHTING FIXTURE-CEILING MOUNT</td></tr><tr><td>[Symbol]</td><td>LIGHTING FIXTURE-CEILING MOUNT</td></tr><tr><td>[Symbol]</td><td>LIGHTING FIXTURE-WALL SCONCE</td></tr><tr><td>[Symbol]</td><td>LIGHTING FIXTURE-BRACKET MOUNT</td></tr><tr><td>[Symbol]</td><td>LIGHTING FIXTURE-EMERGENCY BATTERY PACK</td></tr><tr><td>[Symbol]</td><td>LIGHTING FIXTURE-EMERGENCY BATTERY PACK</td></tr><tr><td>[Symbol]</td><td>POLE MOUNTED LIGHTING FIXTURE AS TYPED REFER TO POLE BASE DETAIL "PB"</td></tr><tr><td>[Symbol]</td><td>LIGHTING FIXTURE- SPECIAL REFER TO SPEC'S</td></tr><tr><td>[Symbol]</td><td>LIGHTING FIXTURE-EXIT LIGHT</td></tr><tr><td>[Symbol]</td><td>OCCUPANCY SENSOR</td></tr><tr><td>[Symbol]</td><td>OCCUPANCY SENSOR - 360°</td></tr></table> <table border="0"><tr><td>[Symbol]</td><td>DUPLEX CONVENIENCE OUTLET <DCO></td></tr><tr><td>S.T. [Symbol]</td><td>120V DCO W/ SAFETY or TAMPER PROOF TYPE OUTLET</td></tr><tr><td>[Symbol]</td><td>120V DCO OUTLET w/ GFCI PROTECTION</td></tr><tr><td>[Symbol]</td><td>120V DCO OUTLET w/ AFCI PROTECTION</td></tr><tr><td>[Symbol]</td><td>120V DCO OUTLET w/ AFCI & GROUND FAULT PROTECTION</td></tr><tr><td>USB [Symbol]</td><td>DCO 120V W/ USB CHARGER</td></tr><tr><td>[Symbol]</td><td>DCO 120V W/ HALF SWITCHED</td></tr><tr><td>[Symbol]</td><td>QUADPLEX CONVENIENCE OUTLET</td></tr><tr><td>[Symbol]</td><td>QUADPLEX CONVENIENCE OUTLET W/ GFCI OUTLETS</td></tr><tr><td>[Symbol]</td><td>DEDICATED DCO (HARD WIRE GROUND)</td></tr><tr><td>[Symbol]</td><td>DEDICATED DCO (SPECIFIC EQUIPMENT)</td></tr><tr><td>[Symbol]</td><td>OUTLET 208V - AS NOTED</td></tr><tr><td>(AC) [Symbol]</td><td>AUTO-CHARGING STATION 208V REFER TO SPEC.</td></tr><tr><td>[Symbol] NTD</td><td>TWO SECTION ALUMINUM POWER/COMM POLE W/ QUAD OUTLET *N* TELE/DATA OUTLETS WHERE *N* = THE NUMBER OF OUTLETS/CABLES.</td></tr></table> <table border="0"><tr><td>[Symbol]</td><td>OCCUPANCY SENSOR RELAY</td></tr><tr><td>[Symbol]</td><td>JUNCTION BOX</td></tr><tr><td>[Symbol]</td><td>FLOOR MOUNTED OUTLET - AS NOTED</td></tr><tr><td>[Symbol]</td><td>CONNECTION TO EQUIPMENT</td></tr><tr><td>[Symbol]</td><td>MOTOR DRIVEN DEVICE</td></tr><tr><td>[Symbol]</td><td>* = DEVICE OVER COUNTER</td></tr><tr><td>S₁</td><td>LIGHTING SWITCH - SECTION AS NOTED</td></tr><tr><td>S₃</td><td>LIGHTING SWITCH - THREE WAY</td></tr><tr><td>S</td><td>LIGHTING SWITCH - SINGLE POLE</td></tr><tr><td>S₄</td><td>LIGHTING SWITCH - FOUR WAY</td></tr><tr><td>S_D</td><td>LIGHTING SWITCH - DIMMER</td></tr><tr><td>S_K</td><td>LIGHTING SWITCH - KEYED</td></tr><tr><td>S_P</td><td>LIGHTING SWITCH - PILOT LIGHTED</td></tr><tr><td>S_M</td><td>LIGHTING SWITCH - MOMENTARY CONTACT</td></tr><tr><td>S_{MR}</td><td>SWITCH - MOTOR RATED</td></tr><tr><td>S_V OR S_{OC}</td><td>SWITCH - WITH OCCUPANCY SENSOR</td></tr><tr><td>S_{day}</td><td>SWITCH - WITH DAY LIGHT SENSOR</td></tr><tr><td>S_{TM}</td><td>SWITCH - WITH TIMER</td></tr><tr><td>[Symbol]</td><td>SECURITY MOTION DETECTOR</td></tr><tr><td>[Symbol]</td><td>SECURITY CAMERA</td></tr></table>	-----	BRANCH CIRCUIT IN WALL OR CEILING	- - - - -	BRANCH CIRCUIT EXPOSED	-----	BRANCH CIRCUIT IN FLOOR OR EARTH	- - - - -	BRANCH CIRCUIT EXISTING	-----	UNDERGROUND PRIMARY	HV ----- HV	PWR LINE PWR	PWR ----- PWR	EMERGENCY CIRCUIT EMR	EMR ----- EMR	TELEPHONE LINE TEL	TEL ----- TEL	WIRE MOLD WM	WM ----- WM	DATA DA	DA ----- DA		(E) ⊕	DARKER LINES INDICATE NEW LIGHTER LINES W/ (<) INDICATE EXISTING		HASH MARK = HARD WIRED GROUND		HASH MARKS = # OF WIRES < NO HASH MARKS = 2 WIRES + 1 GRND		HASH MARKS = # OF WIRES W/ HARD WIRED GROUND	[Symbol]	LIGHTING FIXTURE-2' X2' OR 2' X4' RECESSED MOUNT	[Symbol]	LIGHTING FIXTURE-2' X2' OR 2' X4'-SURFACE MOUNT	[Symbol]	LIGHTING FIXTURE-2' X2' OR 2' X4'-W/ EMERGENCY BATTERY INVERTER	[Symbol]	LIGHTING FIXTURE-2' X2' OR 2' X4'-ON EMERGENCY CIRCUIT	[Symbol]	LIGHTING FIXTURE-2' X2' OR 2' X4' EXISTING SHOWN DOTTED (TYPICAL TO REMOVE)	[Symbol]	LIGHTING FIXTURE-2' X2' OR 2' X4' EXISTING SHOWN LIGHT LINED (<) (TYPICAL TO REMAIN)	[Symbol]	LIGHTING FIXTURE - STRIP / SURFACE MOUNT 2' X4'	[Symbol]	LIGHTING FIXTURE - STRIP / SURFACE MOUNT 2' X4' SHOWN DOTTED (TYPICAL TO REMOVE)	[Symbol]	LIGHTING FIXTURE-WALL MOUNT	[Symbol]	LIGHTING FIXTURE-RECESSED	[Symbol]	LIGHT/FAN FIXTURE-RECESSED	[Symbol]	LIGHTING FIXTURE-CEILING MOUNT	[Symbol]	LIGHTING FIXTURE-CEILING MOUNT	[Symbol]	LIGHTING FIXTURE-WALL SCONCE	[Symbol]	LIGHTING FIXTURE-BRACKET MOUNT	[Symbol]	LIGHTING FIXTURE-EMERGENCY BATTERY PACK	[Symbol]	LIGHTING FIXTURE-EMERGENCY BATTERY PACK	[Symbol]	POLE MOUNTED LIGHTING FIXTURE AS TYPED REFER TO POLE BASE DETAIL "PB"	[Symbol]	LIGHTING FIXTURE- SPECIAL REFER TO SPEC'S	[Symbol]	LIGHTING FIXTURE-EXIT LIGHT	[Symbol]	OCCUPANCY SENSOR	[Symbol]	OCCUPANCY SENSOR - 360°	[Symbol]	DUPLEX CONVENIENCE OUTLET <DCO>	S.T. [Symbol]	120V DCO W/ SAFETY or TAMPER PROOF TYPE OUTLET	[Symbol]	120V DCO OUTLET w/ GFCI PROTECTION	[Symbol]	120V DCO OUTLET w/ AFCI PROTECTION	[Symbol]	120V DCO OUTLET w/ AFCI & GROUND FAULT PROTECTION	USB [Symbol]	DCO 120V W/ USB CHARGER	[Symbol]	DCO 120V W/ HALF SWITCHED	[Symbol]	QUADPLEX CONVENIENCE OUTLET	[Symbol]	QUADPLEX CONVENIENCE OUTLET W/ GFCI OUTLETS	[Symbol]	DEDICATED DCO (HARD WIRE GROUND)	[Symbol]	DEDICATED DCO (SPECIFIC EQUIPMENT)	[Symbol]	OUTLET 208V - AS NOTED	(AC) [Symbol]	AUTO-CHARGING STATION 208V REFER TO SPEC.	[Symbol] NTD	TWO SECTION ALUMINUM POWER/COMM POLE W/ QUAD OUTLET *N* TELE/DATA OUTLETS WHERE *N* = THE NUMBER OF OUTLETS/CABLES.	[Symbol]	OCCUPANCY SENSOR RELAY	[Symbol]	JUNCTION BOX	[Symbol]	FLOOR MOUNTED OUTLET - AS NOTED	[Symbol]	CONNECTION TO EQUIPMENT	[Symbol]	MOTOR DRIVEN DEVICE	[Symbol]	* = DEVICE OVER COUNTER	S ₁	LIGHTING SWITCH - SECTION AS NOTED	S ₃	LIGHTING SWITCH - THREE WAY	S	LIGHTING SWITCH - SINGLE POLE	S ₄	LIGHTING SWITCH - FOUR WAY	S _D	LIGHTING SWITCH - DIMMER	S _K	LIGHTING SWITCH - KEYED	S _P	LIGHTING SWITCH - PILOT LIGHTED	S _M	LIGHTING SWITCH - MOMENTARY CONTACT	S _{MR}	SWITCH - MOTOR RATED	S _V OR S _{OC}	SWITCH - WITH OCCUPANCY SENSOR	S _{day}	SWITCH - WITH DAY LIGHT SENSOR	S _{TM}	SWITCH - WITH TIMER	[Symbol]	SECURITY MOTION DETECTOR	[Symbol]	SECURITY CAMERA	<table border="0"><tr><td>[Symbol]</td><td>ELECTRICAL PANEL W/NAME (TYPICAL TO NEW)</td></tr><tr><td>[Symbol]</td><td>ELECTRICAL PANEL EXISTING W/NAME (TYPICAL TO REMOVE)</td></tr><tr><td>[Symbol]</td><td>ELECTRICAL PANEL EXISTING W/NAME (<) (TYPICAL TO REMAIN)</td></tr><tr><td>[Symbol]</td><td>FIRE ALARM SIGNAL LIGHT AND HORN (MINI HORN STROBE LOWER db)</td></tr><tr><td>[Symbol]</td><td>FIRE ALARM SIGNAL LIGHT AND HORN (*pezzio* sound)</td></tr><tr><td>[Symbol]</td><td>FIRE ALARM PULL STATION</td></tr><tr><td>[Symbol]</td><td>FIRE ALARM HORN</td></tr><tr><td>[Symbol]</td><td>FIRE ALARM SIGNAL LIGHT</td></tr><tr><td>[Symbol]</td><td>FIRE ALARM SIGNAL LIGHT AND HORN</td></tr><tr><td>[Symbol]</td><td>FIRE ALARM SMOKE DETECTOR</td></tr><tr><td>[Symbol]</td><td>FIRE ALARM DUCT DETECTOR</td></tr><tr><td>[Symbol]</td><td>FIRE ALARM HEAT DETECTOR</td></tr><tr><td>[Symbol]</td><td>FIRE ALARM DETECTOR W/ A = AUX. CONTACTS</td></tr><tr><td>[Symbol]</td><td>FIRE ALARM DETECTOR W/ HORN STROBE BASE</td></tr><tr><td>[Symbol]</td><td>FIRE ALARM MAGNETIC DOOR HOLDER</td></tr><tr><td>[Symbol]</td><td>FIRE ALARM EQUIPMENT CONNECTION</td></tr><tr><td>[Symbol]</td><td>FIRE SMOKE DAMPER</td></tr><tr><td>[Symbol]</td><td>FIRE ALARM DETECTOR CARBON MONOXIDE</td></tr><tr><td>[Symbol]</td><td>FIRE ALARM DETECTOR W/ AB = ALARM BASE</td></tr><tr><td>CN [Symbol]</td><td>CARBON MONOXIDE OUTLET</td></tr><tr><td>[Symbol]</td><td>KEY PAD OUTLET</td></tr><tr><td>[Symbol]</td><td>CARD READER LOCATION / VERIFY PRIOR</td></tr><tr><td>[Symbol]</td><td>COMMUNICATIONS OUTLET</td></tr><tr><td>[Symbol]</td><td>VOLUME CONTROL OUTLET</td></tr><tr><td>[Symbol]</td><td>CLOCK</td></tr><tr><td>[Symbol]</td><td>CLOCK-SPEAKER COMBINATION</td></tr><tr><td>[Symbol]</td><td>CLASS BELL</td></tr><tr><td>[Symbol]</td><td>CLASSROOM SOUND REINFORCEMENT SPEAKER</td></tr><tr><td>[Symbol]</td><td>I/C SPEAKER</td></tr><tr><td>[Symbol]</td><td>PUSH BUTTON / CALL BACK SWITCH/WITH SPEAKER</td></tr><tr><td>[Symbol]</td><td>PUSH BUTTON / CALL BACK SWITCH</td></tr><tr><td>[Symbol]</td><td>PUSH BUTTON / START-STOP</td></tr><tr><td>[Symbol]</td><td>DOOR BELL w/ STROBE per ADA</td></tr><tr><td>[Symbol]</td><td>DATA OUTLET</td></tr><tr><td>N'D [Symbol]</td><td>DATA OUTLET</td></tr><tr><td>[Symbol]</td><td>PRINTER OUTLET</td></tr><tr><td>TV [Symbol]</td><td>TELEVISION OUTLET</td></tr><tr><td>M [Symbol]</td><td>AUDIO JACK OUTLET</td></tr><tr><td>AV [Symbol]</td><td>VIDEO OUTLET</td></tr><tr><td>[Symbol]</td><td>TELEPHONE OUTLET</td></tr><tr><td>[Symbol]</td><td>INTERCOM OUTLET</td></tr><tr><td>[Symbol]</td><td>DISCONNECT W/FUSES</td></tr><tr><td>[Symbol]</td><td>DISCONNECT</td></tr><tr><td>[Symbol]</td><td>PHOTO ELECTRIC CELL</td></tr><tr><td>TC [Symbol]</td><td>TIME CLOCK</td></tr><tr><td>NL [Symbol]</td><td>NIGHT LIGHT</td></tr><tr><td>WP [Symbol]</td><td>WEATHER PROOF</td></tr><tr><td>WG [Symbol]</td><td>WIRE GUARD</td></tr><tr><td>E.C. [Symbol]</td><td>ELECTRICAL CONTRACTOR</td></tr><tr><td>BKR [Symbol]</td><td>CIRCUIT BREAKER</td></tr><tr><td>[Symbol]</td><td>PHOTO ELECTRIC CELL</td></tr><tr><td>NEC [Symbol]</td><td>NATIONAL ELECTRICAL CODE</td></tr><tr><td>W/ [Symbol]</td><td>WITH</td></tr><tr><td>DCO [Symbol]</td><td>DUPLEX CONVENIENCE OUTLET</td></tr><tr><td>CKT [Symbol]</td><td>CIRCUIT</td></tr><tr><td>AFF [Symbol]</td><td>ABOVE FINISH FLOOR</td></tr><tr><td>BFG [Symbol]</td><td>BELOW FINISHED GRADE</td></tr><tr><td>[Symbol]</td><td>CIRCUIT BREAKER ENCLOSURE</td></tr><tr><td>st [Symbol]</td><td>st = SHUNT TRIP</td></tr><tr><td>K [Symbol]</td><td>INSTALLED IN THE KICK AREA</td></tr><tr><td>(E) [Symbol]</td><td>EXISTING ELECTRICAL DEVICE (TYPICAL TO REMAIN)</td></tr><tr><td>[Symbol]</td><td>FIXTURE TYPE - LETTER UNDERLINED</td></tr><tr><td>[Symbol]</td><td>NUMBERED HEX SYMBOLS: REFER TO MECHANICAL EQUIPMENT CONNECTION SCHEDULE</td></tr><tr><td>[Symbol]</td><td>LETTERED HEX SYMBOLS: REFER TO SHEET NOTES</td></tr><tr><td>[Symbol]</td><td>OTHER SYMBOL SHAPES: REFER TO OTHER EQUIPMENT CONNECTION SCHEDULES AS NEEDED.</td></tr><tr><td>[Symbol]</td><td>NOTE: DOTTED SYMBOLS REFER TO DEVICES TO BE REMOVED. DASHED OR DOTTED CONDUIT LINES ON DEMO SHEETS ARE TO BE VERIFIED BEFORE REMOVAL. THESE ARE USUALLY INDICATIONS OF SURFACE OR UNDERGROUND RUN CONDUIT.</td></tr><tr><td>[Symbol]</td><td>1" CONDUIT FROM DEVICE BOX TO ACCESSIBLE CEILING SPACE OR AS NOTED.</td></tr><tr><td>[Symbol]</td><td>CONDUIT HOME RUN FROM DEVICE BOX TO PANEL AS CIRCUITED.</td></tr><tr><td>[Symbol]</td><td>EMERGENCY CALL STATION</td></tr><tr><td>[Symbol]</td><td>DOOR POSITION SENSOR</td></tr><tr><td>[Symbol]</td><td>ELECTRIC WALL HEATER w/ stat (CADET #675067)</td></tr></table>	[Symbol]	ELECTRICAL PANEL W/NAME (TYPICAL TO NEW)	[Symbol]	ELECTRICAL PANEL EXISTING W/NAME (TYPICAL TO REMOVE)	[Symbol]	ELECTRICAL PANEL EXISTING W/NAME (<) (TYPICAL TO REMAIN)	[Symbol]	FIRE ALARM SIGNAL LIGHT AND HORN (MINI HORN STROBE LOWER db)	[Symbol]	FIRE ALARM SIGNAL LIGHT AND HORN (*pezzio* sound)	[Symbol]	FIRE ALARM PULL STATION	[Symbol]	FIRE ALARM HORN	[Symbol]	FIRE ALARM SIGNAL LIGHT	[Symbol]	FIRE ALARM SIGNAL LIGHT AND HORN	[Symbol]	FIRE ALARM SMOKE DETECTOR	[Symbol]	FIRE ALARM DUCT DETECTOR	[Symbol]	FIRE ALARM HEAT DETECTOR	[Symbol]	FIRE ALARM DETECTOR W/ A = AUX. CONTACTS	[Symbol]	FIRE ALARM DETECTOR W/ HORN STROBE BASE	[Symbol]	FIRE ALARM MAGNETIC DOOR HOLDER	[Symbol]	FIRE ALARM EQUIPMENT CONNECTION	[Symbol]	FIRE SMOKE DAMPER	[Symbol]	FIRE ALARM DETECTOR CARBON MONOXIDE	[Symbol]	FIRE ALARM DETECTOR W/ AB = ALARM BASE	CN [Symbol]	CARBON MONOXIDE OUTLET	[Symbol]	KEY PAD OUTLET	[Symbol]	CARD READER LOCATION / VERIFY PRIOR	[Symbol]	COMMUNICATIONS OUTLET	[Symbol]	VOLUME CONTROL OUTLET	[Symbol]	CLOCK	[Symbol]	CLOCK-SPEAKER COMBINATION	[Symbol]	CLASS BELL	[Symbol]	CLASSROOM SOUND REINFORCEMENT SPEAKER	[Symbol]	I/C SPEAKER	[Symbol]	PUSH BUTTON / CALL BACK SWITCH/WITH SPEAKER	[Symbol]	PUSH BUTTON / CALL BACK SWITCH	[Symbol]	PUSH BUTTON / START-STOP	[Symbol]	DOOR BELL w/ STROBE per ADA	[Symbol]	DATA OUTLET	N'D [Symbol]	DATA OUTLET	[Symbol]	PRINTER OUTLET	TV [Symbol]	TELEVISION OUTLET	M [Symbol]	AUDIO JACK OUTLET	AV [Symbol]	VIDEO OUTLET	[Symbol]	TELEPHONE OUTLET	[Symbol]	INTERCOM OUTLET	[Symbol]	DISCONNECT W/FUSES	[Symbol]	DISCONNECT	[Symbol]	PHOTO ELECTRIC CELL	TC [Symbol]	TIME CLOCK	NL [Symbol]	NIGHT LIGHT	WP [Symbol]	WEATHER PROOF	WG [Symbol]	WIRE GUARD	E.C. [Symbol]	ELECTRICAL CONTRACTOR	BKR [Symbol]	CIRCUIT BREAKER	[Symbol]	PHOTO ELECTRIC CELL	NEC [Symbol]	NATIONAL ELECTRICAL CODE	W/ [Symbol]	WITH	DCO [Symbol]	DUPLEX CONVENIENCE OUTLET	CKT [Symbol]	CIRCUIT	AFF [Symbol]	ABOVE FINISH FLOOR	BFG [Symbol]	BELOW FINISHED GRADE	[Symbol]	CIRCUIT BREAKER ENCLOSURE	st [Symbol]	st = SHUNT TRIP	K [Symbol]	INSTALLED IN THE KICK AREA	(E) [Symbol]	EXISTING ELECTRICAL DEVICE (TYPICAL TO REMAIN)	[Symbol]	FIXTURE TYPE - LETTER UNDERLINED	[Symbol]	NUMBERED HEX SYMBOLS: REFER TO MECHANICAL EQUIPMENT CONNECTION SCHEDULE	[Symbol]	LETTERED HEX SYMBOLS: REFER TO SHEET NOTES	[Symbol]	OTHER SYMBOL SHAPES: REFER TO OTHER EQUIPMENT CONNECTION SCHEDULES AS NEEDED.	[Symbol]	NOTE: DOTTED SYMBOLS REFER TO DEVICES TO BE REMOVED. DASHED OR DOTTED CONDUIT LINES ON DEMO SHEETS ARE TO BE VERIFIED BEFORE REMOVAL. THESE ARE USUALLY INDICATIONS OF SURFACE OR UNDERGROUND RUN CONDUIT.	[Symbol]	1" CONDUIT FROM DEVICE BOX TO ACCESSIBLE CEILING SPACE OR AS NOTED.	[Symbol]	CONDUIT HOME RUN FROM DEVICE BOX TO PANEL AS CIRCUITED.	[Symbol]	EMERGENCY CALL STATION	[Symbol]	DOOR POSITION SENSOR	[Symbol]	ELECTRIC WALL HEATER w/ stat (CADET #675067)
-----	BRANCH CIRCUIT IN WALL OR CEILING																																																																																																																																																																																																																																																																																												
- - - - -	BRANCH CIRCUIT EXPOSED																																																																																																																																																																																																																																																																																												
-----	BRANCH CIRCUIT IN FLOOR OR EARTH																																																																																																																																																																																																																																																																																												
- - - - -	BRANCH CIRCUIT EXISTING																																																																																																																																																																																																																																																																																												
-----	UNDERGROUND PRIMARY																																																																																																																																																																																																																																																																																												
HV ----- HV	PWR LINE PWR																																																																																																																																																																																																																																																																																												
PWR ----- PWR	EMERGENCY CIRCUIT EMR																																																																																																																																																																																																																																																																																												
EMR ----- EMR	TELEPHONE LINE TEL																																																																																																																																																																																																																																																																																												
TEL ----- TEL	WIRE MOLD WM																																																																																																																																																																																																																																																																																												
WM ----- WM	DATA DA																																																																																																																																																																																																																																																																																												
DA ----- DA																																																																																																																																																																																																																																																																																													
(E) ⊕	DARKER LINES INDICATE NEW LIGHTER LINES W/ (<) INDICATE EXISTING																																																																																																																																																																																																																																																																																												
	HASH MARK = HARD WIRED GROUND																																																																																																																																																																																																																																																																																												
	HASH MARKS = # OF WIRES < NO HASH MARKS = 2 WIRES + 1 GRND																																																																																																																																																																																																																																																																																												
	HASH MARKS = # OF WIRES W/ HARD WIRED GROUND																																																																																																																																																																																																																																																																																												
[Symbol]	LIGHTING FIXTURE-2' X2' OR 2' X4' RECESSED MOUNT																																																																																																																																																																																																																																																																																												
[Symbol]	LIGHTING FIXTURE-2' X2' OR 2' X4'-SURFACE MOUNT																																																																																																																																																																																																																																																																																												
[Symbol]	LIGHTING FIXTURE-2' X2' OR 2' X4'-W/ EMERGENCY BATTERY INVERTER																																																																																																																																																																																																																																																																																												
[Symbol]	LIGHTING FIXTURE-2' X2' OR 2' X4'-ON EMERGENCY CIRCUIT																																																																																																																																																																																																																																																																																												
[Symbol]	LIGHTING FIXTURE-2' X2' OR 2' X4' EXISTING SHOWN DOTTED (TYPICAL TO REMOVE)																																																																																																																																																																																																																																																																																												
[Symbol]	LIGHTING FIXTURE-2' X2' OR 2' X4' EXISTING SHOWN LIGHT LINED (<) (TYPICAL TO REMAIN)																																																																																																																																																																																																																																																																																												
[Symbol]	LIGHTING FIXTURE - STRIP / SURFACE MOUNT 2' X4'																																																																																																																																																																																																																																																																																												
[Symbol]	LIGHTING FIXTURE - STRIP / SURFACE MOUNT 2' X4' SHOWN DOTTED (TYPICAL TO REMOVE)																																																																																																																																																																																																																																																																																												
[Symbol]	LIGHTING FIXTURE-WALL MOUNT																																																																																																																																																																																																																																																																																												
[Symbol]	LIGHTING FIXTURE-RECESSED																																																																																																																																																																																																																																																																																												
[Symbol]	LIGHT/FAN FIXTURE-RECESSED																																																																																																																																																																																																																																																																																												
[Symbol]	LIGHTING FIXTURE-CEILING MOUNT																																																																																																																																																																																																																																																																																												
[Symbol]	LIGHTING FIXTURE-CEILING MOUNT																																																																																																																																																																																																																																																																																												
[Symbol]	LIGHTING FIXTURE-WALL SCONCE																																																																																																																																																																																																																																																																																												
[Symbol]	LIGHTING FIXTURE-BRACKET MOUNT																																																																																																																																																																																																																																																																																												
[Symbol]	LIGHTING FIXTURE-EMERGENCY BATTERY PACK																																																																																																																																																																																																																																																																																												
[Symbol]	LIGHTING FIXTURE-EMERGENCY BATTERY PACK																																																																																																																																																																																																																																																																																												
[Symbol]	POLE MOUNTED LIGHTING FIXTURE AS TYPED REFER TO POLE BASE DETAIL "PB"																																																																																																																																																																																																																																																																																												
[Symbol]	LIGHTING FIXTURE- SPECIAL REFER TO SPEC'S																																																																																																																																																																																																																																																																																												
[Symbol]	LIGHTING FIXTURE-EXIT LIGHT																																																																																																																																																																																																																																																																																												
[Symbol]	OCCUPANCY SENSOR																																																																																																																																																																																																																																																																																												
[Symbol]	OCCUPANCY SENSOR - 360°																																																																																																																																																																																																																																																																																												
[Symbol]	DUPLEX CONVENIENCE OUTLET <DCO>																																																																																																																																																																																																																																																																																												
S.T. [Symbol]	120V DCO W/ SAFETY or TAMPER PROOF TYPE OUTLET																																																																																																																																																																																																																																																																																												
[Symbol]	120V DCO OUTLET w/ GFCI PROTECTION																																																																																																																																																																																																																																																																																												
[Symbol]	120V DCO OUTLET w/ AFCI PROTECTION																																																																																																																																																																																																																																																																																												
[Symbol]	120V DCO OUTLET w/ AFCI & GROUND FAULT PROTECTION																																																																																																																																																																																																																																																																																												
USB [Symbol]	DCO 120V W/ USB CHARGER																																																																																																																																																																																																																																																																																												
[Symbol]	DCO 120V W/ HALF SWITCHED																																																																																																																																																																																																																																																																																												
[Symbol]	QUADPLEX CONVENIENCE OUTLET																																																																																																																																																																																																																																																																																												
[Symbol]	QUADPLEX CONVENIENCE OUTLET W/ GFCI OUTLETS																																																																																																																																																																																																																																																																																												
[Symbol]	DEDICATED DCO (HARD WIRE GROUND)																																																																																																																																																																																																																																																																																												
[Symbol]	DEDICATED DCO (SPECIFIC EQUIPMENT)																																																																																																																																																																																																																																																																																												
[Symbol]	OUTLET 208V - AS NOTED																																																																																																																																																																																																																																																																																												
(AC) [Symbol]	AUTO-CHARGING STATION 208V REFER TO SPEC.																																																																																																																																																																																																																																																																																												
[Symbol] NTD	TWO SECTION ALUMINUM POWER/COMM POLE W/ QUAD OUTLET *N* TELE/DATA OUTLETS WHERE *N* = THE NUMBER OF OUTLETS/CABLES.																																																																																																																																																																																																																																																																																												
[Symbol]	OCCUPANCY SENSOR RELAY																																																																																																																																																																																																																																																																																												
[Symbol]	JUNCTION BOX																																																																																																																																																																																																																																																																																												
[Symbol]	FLOOR MOUNTED OUTLET - AS NOTED																																																																																																																																																																																																																																																																																												
[Symbol]	CONNECTION TO EQUIPMENT																																																																																																																																																																																																																																																																																												
[Symbol]	MOTOR DRIVEN DEVICE																																																																																																																																																																																																																																																																																												
[Symbol]	* = DEVICE OVER COUNTER																																																																																																																																																																																																																																																																																												
S ₁	LIGHTING SWITCH - SECTION AS NOTED																																																																																																																																																																																																																																																																																												
S ₃	LIGHTING SWITCH - THREE WAY																																																																																																																																																																																																																																																																																												
S	LIGHTING SWITCH - SINGLE POLE																																																																																																																																																																																																																																																																																												
S ₄	LIGHTING SWITCH - FOUR WAY																																																																																																																																																																																																																																																																																												
S _D	LIGHTING SWITCH - DIMMER																																																																																																																																																																																																																																																																																												
S _K	LIGHTING SWITCH - KEYED																																																																																																																																																																																																																																																																																												
S _P	LIGHTING SWITCH - PILOT LIGHTED																																																																																																																																																																																																																																																																																												
S _M	LIGHTING SWITCH - MOMENTARY CONTACT																																																																																																																																																																																																																																																																																												
S _{MR}	SWITCH - MOTOR RATED																																																																																																																																																																																																																																																																																												
S _V OR S _{OC}	SWITCH - WITH OCCUPANCY SENSOR																																																																																																																																																																																																																																																																																												
S _{day}	SWITCH - WITH DAY LIGHT SENSOR																																																																																																																																																																																																																																																																																												
S _{TM}	SWITCH - WITH TIMER																																																																																																																																																																																																																																																																																												
[Symbol]	SECURITY MOTION DETECTOR																																																																																																																																																																																																																																																																																												
[Symbol]	SECURITY CAMERA																																																																																																																																																																																																																																																																																												
[Symbol]	ELECTRICAL PANEL W/NAME (TYPICAL TO NEW)																																																																																																																																																																																																																																																																																												
[Symbol]	ELECTRICAL PANEL EXISTING W/NAME (TYPICAL TO REMOVE)																																																																																																																																																																																																																																																																																												
[Symbol]	ELECTRICAL PANEL EXISTING W/NAME (<) (TYPICAL TO REMAIN)																																																																																																																																																																																																																																																																																												
[Symbol]	FIRE ALARM SIGNAL LIGHT AND HORN (MINI HORN STROBE LOWER db)																																																																																																																																																																																																																																																																																												
[Symbol]	FIRE ALARM SIGNAL LIGHT AND HORN (*pezzio* sound)																																																																																																																																																																																																																																																																																												
[Symbol]	FIRE ALARM PULL STATION																																																																																																																																																																																																																																																																																												
[Symbol]	FIRE ALARM HORN																																																																																																																																																																																																																																																																																												
[Symbol]	FIRE ALARM SIGNAL LIGHT																																																																																																																																																																																																																																																																																												
[Symbol]	FIRE ALARM SIGNAL LIGHT AND HORN																																																																																																																																																																																																																																																																																												
[Symbol]	FIRE ALARM SMOKE DETECTOR																																																																																																																																																																																																																																																																																												
[Symbol]	FIRE ALARM DUCT DETECTOR																																																																																																																																																																																																																																																																																												
[Symbol]	FIRE ALARM HEAT DETECTOR																																																																																																																																																																																																																																																																																												
[Symbol]	FIRE ALARM DETECTOR W/ A = AUX. CONTACTS																																																																																																																																																																																																																																																																																												
[Symbol]	FIRE ALARM DETECTOR W/ HORN STROBE BASE																																																																																																																																																																																																																																																																																												
[Symbol]	FIRE ALARM MAGNETIC DOOR HOLDER																																																																																																																																																																																																																																																																																												
[Symbol]	FIRE ALARM EQUIPMENT CONNECTION																																																																																																																																																																																																																																																																																												
[Symbol]	FIRE SMOKE DAMPER																																																																																																																																																																																																																																																																																												
[Symbol]	FIRE ALARM DETECTOR CARBON MONOXIDE																																																																																																																																																																																																																																																																																												
[Symbol]	FIRE ALARM DETECTOR W/ AB = ALARM BASE																																																																																																																																																																																																																																																																																												
CN [Symbol]	CARBON MONOXIDE OUTLET																																																																																																																																																																																																																																																																																												
[Symbol]	KEY PAD OUTLET																																																																																																																																																																																																																																																																																												
[Symbol]	CARD READER LOCATION / VERIFY PRIOR																																																																																																																																																																																																																																																																																												
[Symbol]	COMMUNICATIONS OUTLET																																																																																																																																																																																																																																																																																												
[Symbol]	VOLUME CONTROL OUTLET																																																																																																																																																																																																																																																																																												
[Symbol]	CLOCK																																																																																																																																																																																																																																																																																												
[Symbol]	CLOCK-SPEAKER COMBINATION																																																																																																																																																																																																																																																																																												
[Symbol]	CLASS BELL																																																																																																																																																																																																																																																																																												
[Symbol]	CLASSROOM SOUND REINFORCEMENT SPEAKER																																																																																																																																																																																																																																																																																												
[Symbol]	I/C SPEAKER																																																																																																																																																																																																																																																																																												
[Symbol]	PUSH BUTTON / CALL BACK SWITCH/WITH SPEAKER																																																																																																																																																																																																																																																																																												
[Symbol]	PUSH BUTTON / CALL BACK SWITCH																																																																																																																																																																																																																																																																																												
[Symbol]	PUSH BUTTON / START-STOP																																																																																																																																																																																																																																																																																												
[Symbol]	DOOR BELL w/ STROBE per ADA																																																																																																																																																																																																																																																																																												
[Symbol]	DATA OUTLET																																																																																																																																																																																																																																																																																												
N'D [Symbol]	DATA OUTLET																																																																																																																																																																																																																																																																																												
[Symbol]	PRINTER OUTLET																																																																																																																																																																																																																																																																																												
TV [Symbol]	TELEVISION OUTLET																																																																																																																																																																																																																																																																																												
M [Symbol]	AUDIO JACK OUTLET																																																																																																																																																																																																																																																																																												
AV [Symbol]	VIDEO OUTLET																																																																																																																																																																																																																																																																																												
[Symbol]	TELEPHONE OUTLET																																																																																																																																																																																																																																																																																												
[Symbol]	INTERCOM OUTLET																																																																																																																																																																																																																																																																																												
[Symbol]	DISCONNECT W/FUSES																																																																																																																																																																																																																																																																																												
[Symbol]	DISCONNECT																																																																																																																																																																																																																																																																																												
[Symbol]	PHOTO ELECTRIC CELL																																																																																																																																																																																																																																																																																												
TC [Symbol]	TIME CLOCK																																																																																																																																																																																																																																																																																												
NL [Symbol]	NIGHT LIGHT																																																																																																																																																																																																																																																																																												
WP [Symbol]	WEATHER PROOF																																																																																																																																																																																																																																																																																												
WG [Symbol]	WIRE GUARD																																																																																																																																																																																																																																																																																												
E.C. [Symbol]	ELECTRICAL CONTRACTOR																																																																																																																																																																																																																																																																																												
BKR [Symbol]	CIRCUIT BREAKER																																																																																																																																																																																																																																																																																												
[Symbol]	PHOTO ELECTRIC CELL																																																																																																																																																																																																																																																																																												
NEC [Symbol]	NATIONAL ELECTRICAL CODE																																																																																																																																																																																																																																																																																												
W/ [Symbol]	WITH																																																																																																																																																																																																																																																																																												
DCO [Symbol]	DUPLEX CONVENIENCE OUTLET																																																																																																																																																																																																																																																																																												
CKT [Symbol]	CIRCUIT																																																																																																																																																																																																																																																																																												
AFF [Symbol]	ABOVE FINISH FLOOR																																																																																																																																																																																																																																																																																												
BFG [Symbol]	BELOW FINISHED GRADE																																																																																																																																																																																																																																																																																												
[Symbol]	CIRCUIT BREAKER ENCLOSURE																																																																																																																																																																																																																																																																																												
st [Symbol]	st = SHUNT TRIP																																																																																																																																																																																																																																																																																												
K [Symbol]	INSTALLED IN THE KICK AREA																																																																																																																																																																																																																																																																																												
(E) [Symbol]	EXISTING ELECTRICAL DEVICE (TYPICAL TO REMAIN)																																																																																																																																																																																																																																																																																												
[Symbol]	FIXTURE TYPE - LETTER UNDERLINED																																																																																																																																																																																																																																																																																												
[Symbol]	NUMBERED HEX SYMBOLS: REFER TO MECHANICAL EQUIPMENT CONNECTION SCHEDULE																																																																																																																																																																																																																																																																																												
[Symbol]	LETTERED HEX SYMBOLS: REFER TO SHEET NOTES																																																																																																																																																																																																																																																																																												
[Symbol]	OTHER SYMBOL SHAPES: REFER TO OTHER EQUIPMENT CONNECTION SCHEDULES AS NEEDED.																																																																																																																																																																																																																																																																																												
[Symbol]	NOTE: DOTTED SYMBOLS REFER TO DEVICES TO BE REMOVED. DASHED OR DOTTED CONDUIT LINES ON DEMO SHEETS ARE TO BE VERIFIED BEFORE REMOVAL. THESE ARE USUALLY INDICATIONS OF SURFACE OR UNDERGROUND RUN CONDUIT.																																																																																																																																																																																																																																																																																												
[Symbol]	1" CONDUIT FROM DEVICE BOX TO ACCESSIBLE CEILING SPACE OR AS NOTED.																																																																																																																																																																																																																																																																																												
[Symbol]	CONDUIT HOME RUN FROM DEVICE BOX TO PANEL AS CIRCUITED.																																																																																																																																																																																																																																																																																												
[Symbol]	EMERGENCY CALL STATION																																																																																																																																																																																																																																																																																												
[Symbol]	DOOR POSITION SENSOR																																																																																																																																																																																																																																																																																												
[Symbol]	ELECTRIC WALL HEATER w/ stat (CADET #675067)																																																																																																																																																																																																																																																																																												



Diagram illustrating the existing electrical system configuration:

- EXISTING 500 KVA** (120/208V, 3 PH, 4 W, PUD OWNED - NEAR BOILER BLDG) feeds:
 - EXISTING 1600 AMP (120/208V, 3 PH, 4W MAIN SWB WOOD SHOP)
 - EXISTING 2500 AMP (120/208V, 3 PH, 4W MAIN SWB BOILER AREA)
- EXISTING 500 KVA** (120/208V, 3 PH, 4 W, PUD OWNED - NEAR CAFETERIA) feeds:
 - EXISTING 2500 AMP (120/208V, 3 PH, 4W MAIN SWB CAFETERIA AREA)
- EXISTING PRIMARY METER** (PEAK DEMAND (2 YEARS) 484 KW) is connected to the system.
- NEW LOAD CALCULATION:**
 - NEC LOAD CALCULATION: $((484 \text{ KW}/0.9) \times 1.25) = 672.2 \text{ KVA (1,867 AMPS)}$
 - ADDED LOAD: 26.4 KVA
 - NEW PEAK DEMAND = 698.6 KVA (1940.6 AMPS)
 - TOTAL SERVICE CAPACITY = 2,500A + 2500A + 1600A = 6,600 A

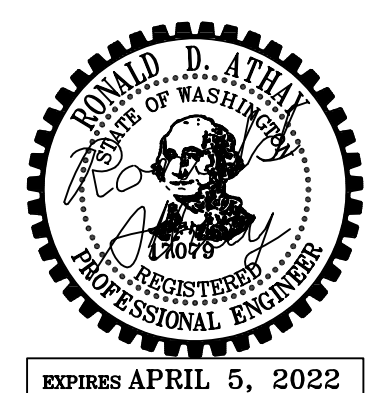
1 MARK MORRIS HIGH SCHOOL CAMPUS ONE LINE DIAGRAM

E0.1 SCALE: N.T.S.

[illegible]

COLLINS
ARCHITECTURAL GROUP, P.S.

950 12th AVE., SUITE 200
LONGVIEW, WA 98632
PHONE: 360-425-0000
E-MAIL: [craig@collinsarchgroup.com](mailto: craig@collinsarchgroup.com)



LPS - MARK MORRIS
SHOP CLASSROOM REMODEL

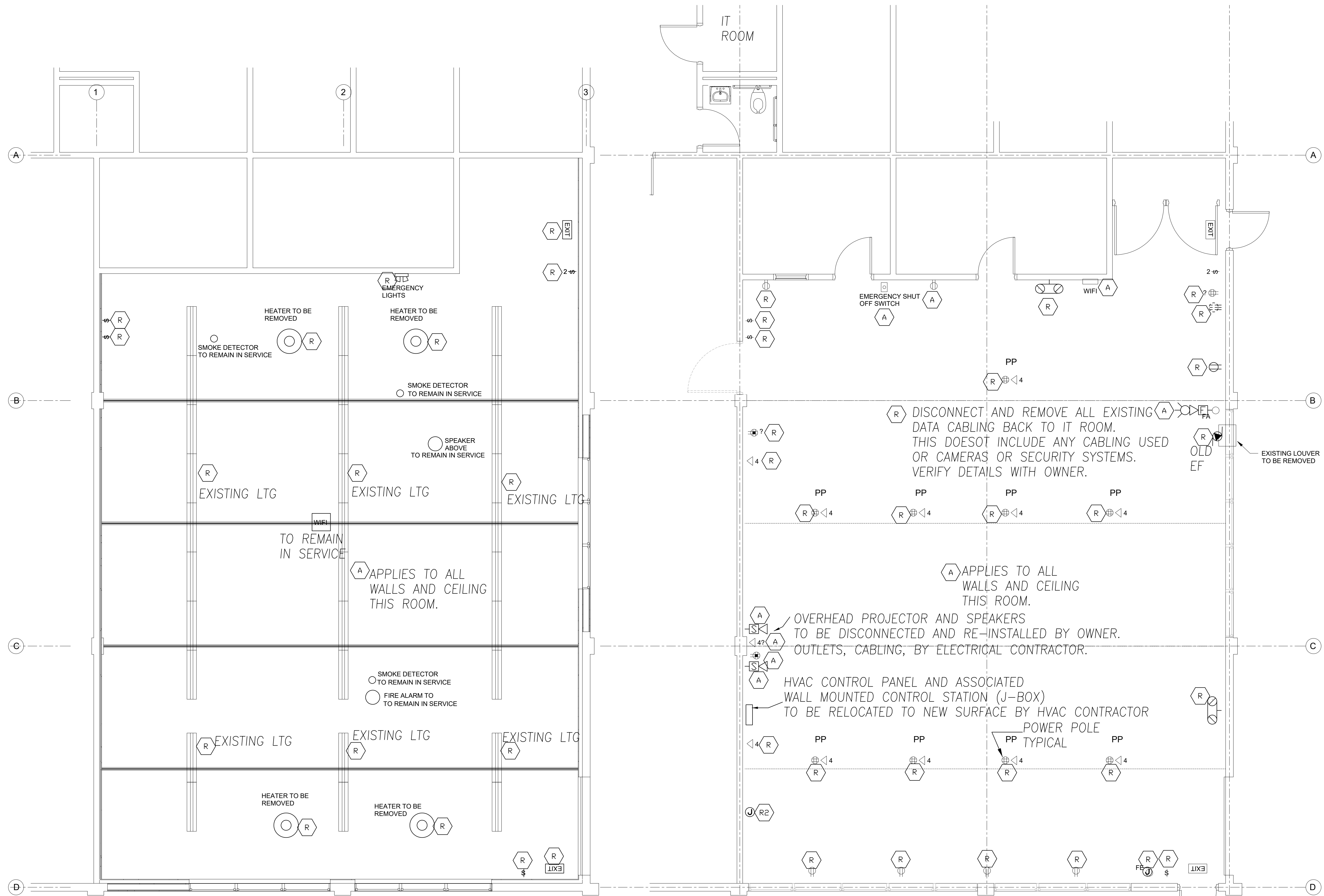
BID SET
06-22-2021

ELEC SYMBOLS
& ONELINE DIA.

2021-12
SHEET NO.

E0.1

Revision Schedule	



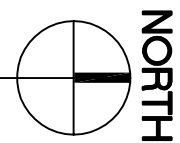
SHEET HEX NOTES:

LIGHTING AND CEILING

A EXISTING ELECTRICAL DEVICE. DISCONNECT AND REMOVE, STORE FOR RE-INSTALLATION. PROVIDE FOR BOX EXTENSION AS NECESSARY FOR NEW WALL. REINSTALL AND RECONNECT TO EXISTING CIRCUITRY (WIRING) COMPLETE. VERIFY REQUIREMENTS ON SITE. NOTE: NOT ALL DEVICES, BOXES, CONDUIT, REQUIRING DISCONNECTION, EXTENSION AND REINSTALLATION ARE SHOWN. VERIFY ON SITE ALL EQUIPMENT REQUIRING RELOCATION, ETC. ON SITE AND INCLUDE ALL SUCH WORK IN BASE BID.

R EXISTING ELECTRICAL EQUIPMENT TO BE DISCONNECTED AND REMOVED. REMOVE ALL ASSOCIATED BOXES, SURFACE CONDUIT, AND ABANDONED CONDUCTORS BACK TO SERVING PANEL. PROVIDE FOR THE CONTINUATION OF CIRCUITRY THAT IS TO REMAIN IN SERVICE. MARK ABANDONED CIRCUITS THAT ARE NOT RE-USED AS SPARE IN PANEL SCHEDULE. VERIFY REQUIREMENTS ON SITE.

R2 EXISTING ELECTRICAL J-BOX WITH WIRING. VERIFY ON SITE THE EXISTING LOAD SERVED. IF EXISTING LOAD IS IN SERVICE, PROVIDE FOR RE-FEEDING OF EXISTING LOAD WITHOUT GOING THRU THIS J-BOX. EXISTING J-BOX SHALL BE ABANDONED. REMOVE ALL ASSOCIATED BOXES, SURFACE CONDUIT, AND ABANDONED CONDUCTORS BACK TO SERVING PANEL. PROVIDE FOR THE CONTINUATION OF CIRCUITRY THAT IS TO REMAIN IN SERVICE. MARK ABANDONED CIRCUITS THAT ARE NOT RE-USED AS SPARE IN PANEL SCHEDULE. VERIFY REQUIREMENTS ON SITE.



A&A

ATHAY & ASSOC.
INC.
CONSULTING
ELECTRICAL ENGINEERS
411 NE 83rd Street
VANCOUVER, WA. 98665
(360)574-0199 (503)285-2456
fax (360)574-0209
rathay@athayeng.com

Revision Schedule		

COLLINS

ARCHITECTURAL GROUP, P.S.

950 12th AVE., SUITE 200
LONGVIEW, WA 98632
PHONE: 360-425-0000
E-MAIL: craigs@collinsarchgroup.com



LPS - MARK MORRIS
SHOP CLASSROOM REMODEL

1602 MARK MORRIS CT, LONGVIEW, WA 98632

BID SET
06-22-2021

LIGHTING

2021-12

SHEET NO.

E2.0

nLIGHT WIRELESS SYSTEM COMPONENTS

- \$nD

nLIGHT #RPODBA DX XX (DIMMING)
- \$nL

nLIGHT #RPODBA XX (NON-DIMMING)
- PP

nLIGHT #RPP20D (dimming relay)
- R

nLIGHT #RPP20 (non-dimming relay)
- (day)

nLIGHT #RCMS PS 150 PDT 10 AR G2
- (OC)

nLIGHT #RCMS PS 150 PDT 10 AR G2 OCCUPANCY SENSOR ONLY.

NOTE:
STARTUP AND ADJUSTMENTS SHALL BE BY FACTORY AUTHORIZED PERSONNEL ONLY
AND SHALL BE INCLUDED IN BASE BID.

NOTE:
1. REFER TO SHEET EO.1 FOR
PANEL SCHEDULE 'SM'

LIGHTING FIXTURE SCHEDULE

ALL LIGHTING FIXTURES ARE "OR AS APPROVED PRIOR TO BID".

- A4E

LITHONIA #BLWP4 40L ADPT 120V EZ1 LP935 NLTAIR2 RES7PDT EL14L
CHAIN HUNG BELOW CEILING STRUCTURE.
- A16

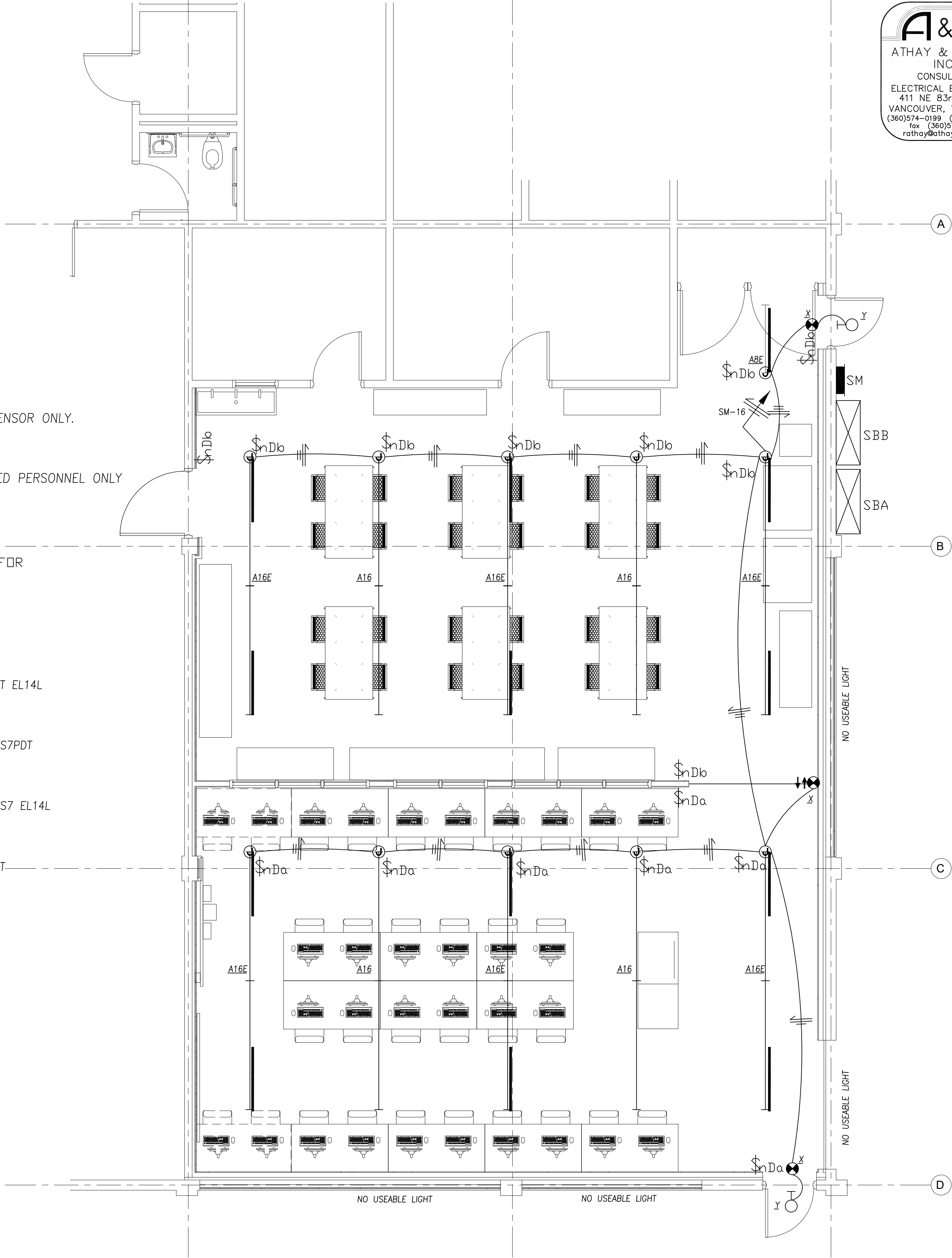
TWO LITHONIA #BLWP8 80L ADPT 120V EZ1 LP935 NLTAIR2 RES7PDT
CONNECT INTO ONE 16 FT RUN WITH BLWP8CR CONNECTOR.
CHAIN HUNG BELOW CEILING STRUCTURE.
- A16E

TWO LITHONIA #BLWP8 80L ADPT 120V EZ1 LP935 NLTAIR2 RES7 EL14L
CONNECT INTO ONE 16 FT RUN WITH BLWP8CR CONNECTOR.
CHAIN HUNG BELOW CEILING STRUCTURE.
- B

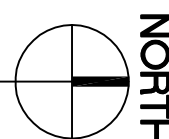
LITHONIA #BLWP4 40L ADPT 120V EZ1 LP935 NLTAIR2 RES7PDT
SURFACE MOUNT ON CEILING.
- X

LITHONIA #LQM S W 3 R 120/277 EL N SD
- Y

ISOLITE #ELED EM BZ CD



1
E2.0
LIGHTING PLAN
SCALE: 1/4" = 1'-0"



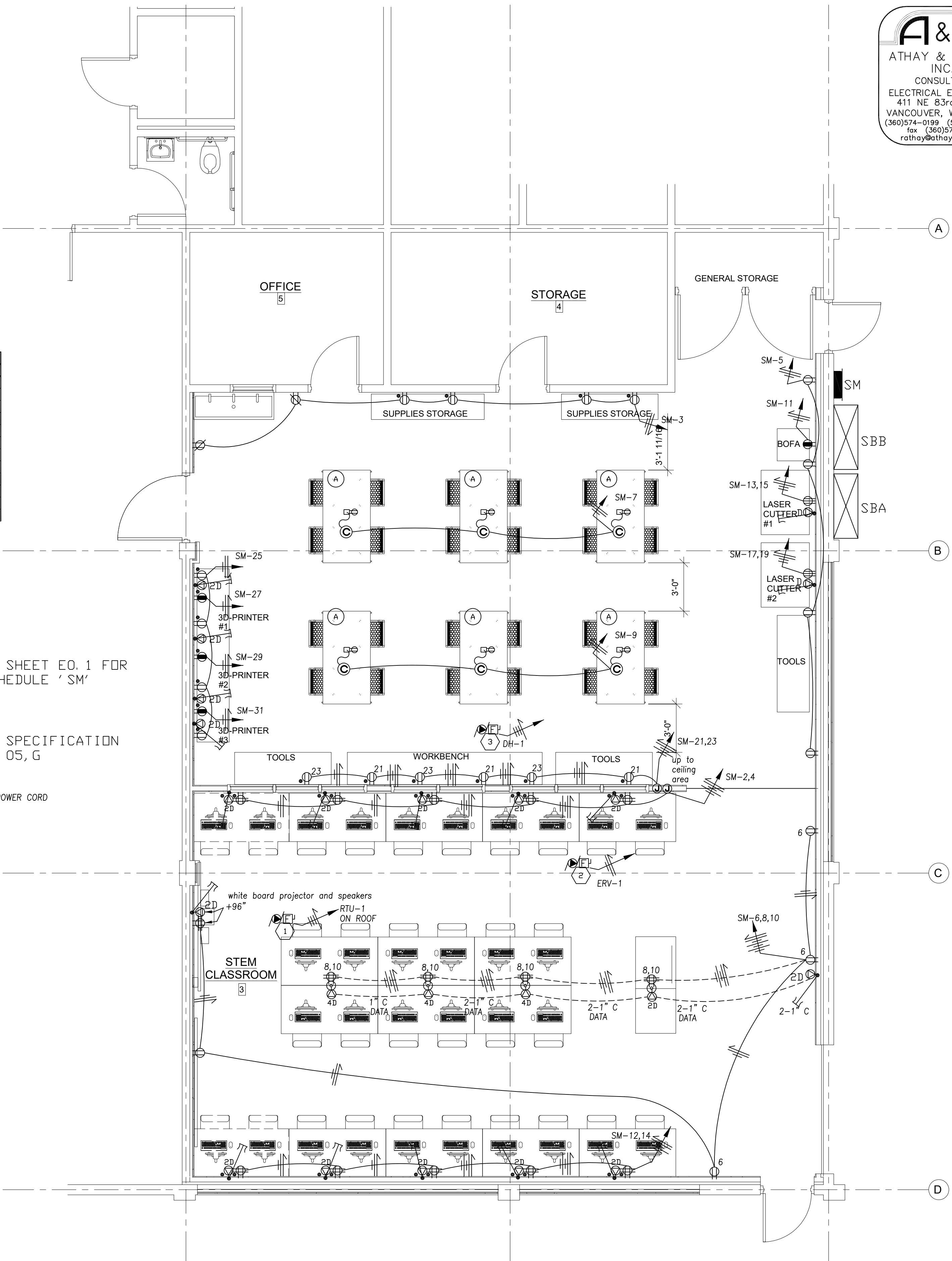
EQUIPMENT CONNECTION SCHEDULE										
	DESCRIPTION	MCA	HP	KVA	PH.	VOLTS	C.	WIRE	CIRCUIT	REMARKS
1	BOFA	14.80		1.78	1	120	1/2"	#12	SM-11	
2	LASER - #1	12.50		2.60	1	208	1/2"	#12	SM-13,15	
3	LASER - #2	12.50		2.60	1	208	1/2"	#12	SM-17,19	
4	SKILL DRILL PRESS 3320	3.20		0.38	1	120	1/2"	#12	ON WORK BENCH	
5	SKILL BAND SAW 3386	2.50		0.30	1	120	1/2"	#12	ON WORK BENCH	
6	PRINTER #1	1.60		0.19	1	120	1/2"	#12	ON WORK BENCH	
7	PRINTER #2	1.60		0.19	1	120	1/2"	#12	ON WORK BENCH	
8	FLASHFORCE 3D LASER PRINTER - #1	4.50		0.54	1	120	1/2"	#12	SM-27	
9	FLASHFORCE 3D LASER PRINTER - #2	4.50		0.54	1	120	1/2"	#12	SM-29	
10	DREMEL 3D LASER PRINTER #3	1.80		0.22	1	120	1/2"	#12	SM-31	
11	DEWALT 20" SCROLL SAW	1.30		0.16	1	120	1/2"	#12	ON WORK BENCH	

NOTE:
1. REFER TO SHEET EO.1 FOR
PANEL SCHEDULE 'SM'

NOTE:
REFER TO SPECIFICATION
260520, 2. 05, G

ck t-#

C POWER REEL W/ POWER CORD



1 POWER PLAN
E3.0 SCALE: 1/4" = 1'-0"